

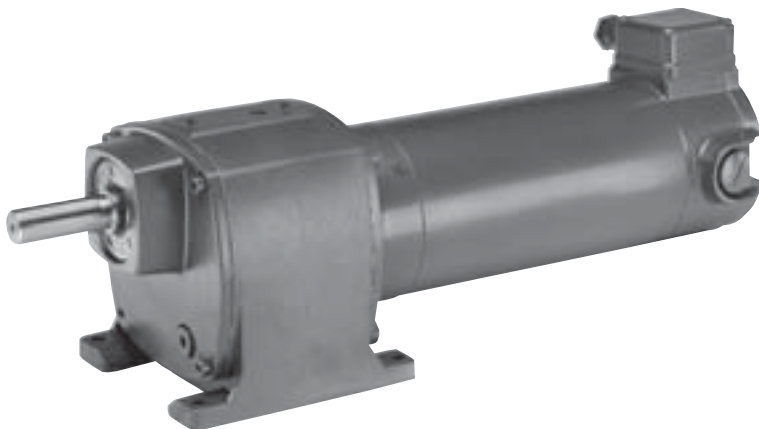
- 1/12 to 3/4 HP Designs
- 60 Hz 208-230/460 & 575 VAC
- One to Four Reduction Stages
- TEFC Enclosure (meets IP55)
- "FO" Motor Conduit Box
- Integral Foot Mounting
- Cut and Ground Helical Gearing
- Factory Filled With Oil
- Double Lipped Oil Seals
- Ball Bearings Throughout
- Approved by UL®, CSA and CE
- Class "F" Insulation

AC Three Phase



- 1/12 to 1/2 HP Designs
- Permanent Split Capacitor Designs
- 60 Hz, 120/240 VAC
- TEFC Enclosure (meets IP55)
- "FO" Motor Conduit Box
- Capacitors Mounted in Box
- Integral Foot Mounting
- Cut and Ground Helical Gearing
- Factory Filled With Oil
- Ball Bearings Throughout
- Approved by UL®, CSA, CE

AC Single Phase



- 1/12 to 3/4 HP Designs
- 90 Volt PM Motor
- One to Four Reduction Stages
- TEFC Enclosure (meets IP44)
- "FO" Motor Conduit Box
- Integral Foot Mounting
- Cut and Ground Helical Gearing
- Factory Filled With Oil
- Double Lipped Oil Seals
- Ball Bearings Throughout
- CSA and CE Compliant

*56 frames are TENV

DC Permanent Magnet



THREE PHASE GEARMOTOR

Ordering Description:

CbN - 1502 - S - A - 11.2 - T24 - 63 - 0.75 -

| Gear Frame | Output Configuration | Mounting | Ratio | Motor Type | Motor Frame | HP | Mod |
|------------|----------------------|---------------|-----------|---|----------------|-------------|-------------|
| 1502 | S - Foot Mounted | A - Any Plane | Nom Ratio | T24 = TEFC IP55, 200-230/460, 60 T57 = TEFC IP55, 575, 60 T38 = TEFC IP55, 380, 50 TS2 = TE1/230 INTELLIGEAR T2 = TE 3/230 INTELLIGEAR T4 = TE 3/460 INTELLIGEAR | 56 63 71 | 0.08 = 1/12 | See Options |
| 1503 | B14 - Face Mounted | | | | | 0.12 = 1/8 | |
| 1504 | (except 1600) | | | | | 0.17 = 1/6 | |
| 1601 | 56C - Flanged | | | | | 0.25 = 1/4 | |
| 1602 | (NEMA 56C) | | | | | 0.33 = 1/3 | |
| 1603 | BS - Flanged Mounted | | | | | 0.50 = 1/2 | |
| 1803 | (except 1600) | | | | | 0.75 = 3/4 | |
| 1904 | | | | | | | |

SINGLE PHASE GEARMOTOR

CbN - 1502 - S - A - 11.2 - TS12 - 71 - 0.50 -

| Gear Frame | Output Configuration | Mounting | Ratio | Motor Type | Motor Frame | HP | Mod |
|------------|----------------------|---------------|-----------|--|----------------|-------------|-------------|
| 1502 | S - Foot Mounted | A - Any Plane | Nom Ratio | TS12 = TEFC IP55 Enclosure 120/240, 1/60 Permanent Split Capacitor | 56 63 71 | 0.08 = 1/12 | See Options |
| 1503 | B14 - Face Mounted | | | | | 0.12 = 1/8 | |
| 1504 | (except 1600) | | | | | 0.17 = 1/6 | |
| 1601 | 56C - Flanged | | | | | 0.25 = 1/4 | |
| 1602 | (NEMA 56C) | | | | | 0.33 = 1/3 | |
| 1603 | BS - Flanged Mounted | | | | | 0.50 = 1/2 | |
| 1803 | (except 1600) | | | | | | |
| 1904 | | | | | | | |

DC GEARMOTORS

CbN - 1502 - S - A - 11.2 - DC9 - 63L - 0.75 -

| Gear Frame | Output Configuration | Mounting | Ratio | Motor Type | Motor Frame | HP | Mod |
|------------|----------------------|---------------|-----------|---|---|-------------|-------------|
| 1502 | S - Foot Mounted | A - Any Plane | Nom Ratio | DC9 = TE IP44, 90 VDC PM DC1 = TE IP44, 180 VDC PM | 56S 56L 56VL 63S 63M 63L | 0.08 = 1/12 | See Options |
| 1503 | B14 - Face Mounted | | | | | 0.12 = 1/8 | |
| 1504 | (except 1600) | | | | | 0.17 = 1/6 | |
| 1601 | 56C - Flanged | | | | | 0.25 = 1/4 | |
| 1602 | (NEMA 56C) | | | | | 0.33 = 1/3 | |
| 1603 | BS - Flanged Mounted | | | | | 0.50 = 1/2 | |
| 1803 | (except 1600) | | | | | 0.75 = 3/4 | |
| 1904 | | | | | | | |



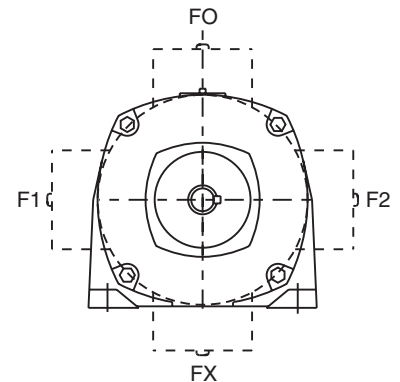
GEAR MOUNTING OPTIONS

| OPTIONS | FRAME SIZE | | | |
|---------------------|------------|------|-----|-----|
| | 15 | 16 | 18 | 19 |
| Mounting | | | | |
| B14 Face Mounting | yes | no | yes | yes |
| 56C Flange Mounting | yes | yes | yes | no |
| BS Flange Mounting | yes | R.O. | yes | yes |

MOTOR - THREE PHASE

| OPTIONS | FRAME SIZE | | |
|------------------------|------------|--------|--------|
| | 56 | 63 | 71 |
| DC Brake | | | |
| FCR Integral Design | yes | yes | yes |
| 50 Hz | | | |
| 3/50/380 V *** | yes | yes | yes |
| Conduit Box | | | |
| FO | std | std | std |
| F-1 or F-2 | yes | yes | yes |
| FX | yes ** | yes ** | yes ** |
| INTELLIGEAR | | | |
| P1 (run/stop/pot.) | no | no | yes |
| P2 (for./rev./pot.) | no | no | yes |
| P3 (pot.only exterior) | no | no | yes |
| P4 (pot.only inside) | no | no | yes |
| R (0-10vdc or 4-20mA) | no | no | yes |
| RP (Profibus DP) | no | no | yes |
| RI (INTERBUS S) | no | no | yes |
| RD (DEVICENET) | no | no | yes |
| RC (CAN OPEN) | no | no | yes |

MOTOR CONDUIT BOX LOCATIONS



MOTOR - SINGLE PHASE

| OPTIONS | FRAME SIZE | | |
|-------------|------------|--------|--------|
| | 56 | 63 | 71 |
| Conduit Box | | | |
| FO | std | std | std |
| F-1 or F-2 | yes | yes | yes |
| FX | yes ** | yes ** | yes ** |

MOTOR - DC PM

| OPTIONS | FRAME SIZE | | |
|-------------|------------|--------|--------|
| | 56 | 63 | 71 |
| 180 VDC | | | |
| 180 VDC | no | yes* | N/A |
| Conduit Box | | | |
| FO | std | std | std |
| F-1 or F-2 | yes | yes | yes |
| FX | yes ** | yes ** | yes ** |

* Motor must be > 1/4 HP

** See Illustration at right and individual print pages for this option
Conduit box may extend down below feet

*** @ 50 Hz at the published HP may be achieved with 5/6 of output RPM shown and 5/6 of service factor and 1.2 times output torque



1/12 HP

| Output RPM | AGMA Class | Output Torque In. Lbs. | OHL Lbs. | Nominal Ratio | Frame Size | | | |
|------------|------------|------------------------|----------|---------------|------------|---------|---------|-------|
| | | | | | Gear | Motor | | |
| | | | | | | 3 Phase | 1 Phase | DC PM |
| 529 | I, II, III | 7 | 297 | 3.15 | 1601 | 56 | 56 | 56S |
| 413 | I, II, III | 9 | 306 | 4 | 1601 | 56 | 56 | 56S |
| 370 | I, II, III | 10 | 322 | 4.5 | 1601 | 56 | 56 | 56S |
| 337 | I, II, III | 11 | 333 | 5 | 1601 | 56 | 56 | 56S |
| 304 | I, II, III | 12 | 344 | 5.6 | 1601 | 56 | 56 | 56S |
| 272 | I, II, III | 14 | 356 | 6.3 | 1601 | 56 | 56 | 56S |
| 241 | I, II, III | 16 | 369 | 7.1 | 1601 | 56 | 56 | 56S |
| 218 | I, II, III | 17 | 384 | 8 | 1601 | 56 | 56 | 56S |
| 192 | I, II, III | 19 | 399 | 9 | 1502 | 56 | 56 | 56S |
| 177 | I, II, III | 21 | 415 | 10 | 1502 | 56 | 56 | 56S |
| 150 | I, II, III | 24 | 415 | 11.2 | 1502 | 56 | 56 | 56S |
| 137 | I, II, III | 27 | 415 | 12.5 | 1502 | 56 | 56 | 56S |
| 125 | I, II, III | 29 | 415 | 14 | 1502 | 56 | 56 | 56S |
| 111 | I, II, III | 33 | 415 | 16 | 1502 | 56 | 56 | 56S |
| 101 | I, II, III | 36 | 415 | 18 | 1502 | 56 | 56 | 56S |
| 91 | I, II, III | 41 | 415 | 20 | 1502 | 56 | 56 | 56S |
| 81 | I, II, III | 46 | 415 | 22.4 | 1502 | 56 | 56 | 56S |
| 71 | I, II, III | 52 | 415 | 25 | 1502 | 56 | 56 | 56S |
| 62 | I, II, III | 59 | 415 | 28 | 1502 | 56 | 56 | 56S |
| 54 | I, II, III | 68 | 415 | 31.5 | 1502 | 56 | 56 | 56S |
| 47 | I, II, III | 76 | 385 | 35.5 | 1503 | 56 | 56 | 56S |
| 43 | I, II, III | 84 | 385 | 40 | 1503 | 56 | 56 | 56S |
| 38 | I, II, III | 95 | 385 | 45 | 1503 | 56 | 56 | 56S |
| 35 | I, II, III | 103 | 385 | 50 | 1503 | 56 | 56 | 56S |
| 30 | I, II, III | 122 | 385 | 56 | 1503 | 56 | 56 | 56S |
| 27 | I, II, III | 133 | 385 | 63 | 1503 | 56 | 56 | 56S |
| 25 | I, II, III | 146 | 385 | 71 | 1503 | 56 | 56 | 56S |
| 22 | I, II, III | 165 | 385 | 80 | 1503 | 56 | 56 | 56S |
| 20 | I, II, III | 182 | 385 | 90 | 1503 | 56 | 56 | 56S |
| 18 | I, II, III | 203 | 385 | 100 | 1503 | 56 | 56 | 56S |
| 16 | I, II, III | 228 | 385 | 112 | 1503 | 56 | 56 | 56S |
| 14 | I, II | 258 | 385 | 125 | 1503 | 56 | 56 | 56S |
| 14 | III | 258 | 185 | 125 | 1603 | 56 | 56 | 56S |
| 12 | I, II | 296 | 385 | 140 | 1503 | 56 | 56 | 56S |
| 12 | III | 296 | 185 | 140 | 1603 | 56 | 56 | 56S |
| 11 | I, II | 339 | 385 | 160 | 1503 | 56 | 56 | 56S |
| 11 | III | 339 | 185 | 160 | 1603 | 56 | 56 | 56S |
| 9.7 | I | 366 | 280 | 180 | 1504 | 56 | 56 | 56S |
| 8.6 | I | 411 | 280 | 200 | 1504 | 56 | 56 | 56S |
| 6.6 | I | 519 | 280 | 250 | 1504 | 56 | 56 | 56S |
| 5.9 | I | 525 | 280 | 315 | 1504 | 56 | 56 | 56S |

3 Phase TEFC in 60 Hz 200-230/460V (T24) or 575V (T57)
 1 Phase TEFC are PSC 60 Hz 120/240V (TS12)
 DC are PM TENV for 90VDC (DC9)



| 1/8 HP | | | | | | | | |
|------------|------------|------------------------|----------|---------------|------------|---------|---------|-------|
| Output RPM | AGMA Class | Output Torque In. Lbs. | OHL Lbs. | Nominal Ratio | Frame Size | | | |
| | | | | | Gear | Motor | | |
| | | | | | | 3 Phase | 1 Phase | DC PM |
| 529 | I, II, III | 12 | 296 | 3.15 | 1601 | 56 | 63 | 56L |
| 413 | I, II, III | 15 | 305 | 4 | 1601 | 56 | 63 | 56L |
| 370 | I, II, III | 17 | 320 | 4.5 | 1601 | 56 | 63 | 56L |
| 337 | I, II, III | 19 | 332 | 5 | 1601 | 56 | 63 | 56L |
| 304 | I, II, III | 21 | 343 | 5.6 | 1601 | 56 | 63 | 56L |
| 272 | I, II, III | 22 | 354 | 6.3 | 1601 | 56 | 63 | 56L |
| 241 | I, II, III | 26 | 367 | 7.1 | 1601 | 56 | 63 | 56L |
| 218 | I, II, III | 29 | 382 | 8 | 1601 | 56 | 63 | 56L |
| 192 | I, II, III | 32 | 397 | 9 | 1502 | 56 | 63 | 56L |
| 177 | I, II, III | 35 | 415 | 10 | 1502 | 56 | 63 | 56L |
| 150 | I, II, III | 41 | 415 | 11.2 | 1502 | 56 | 63 | 56L |
| 137 | I, II, III | 45 | 415 | 12.5 | 1502 | 56 | 63 | 56L |
| 125 | I, II, III | 49 | 415 | 14 | 1502 | 56 | 63 | 56L |
| 111 | I, II, III | 56 | 415 | 16 | 1502 | 56 | 63 | 56L |
| 101 | I, II, III | 62 | 415 | 18 | 1502 | 56 | 63 | 56L |
| 91 | I, II, III | 69 | 415 | 20 | 1502 | 56 | 63 | 56L |
| 81 | I, II, III | 77 | 415 | 22.4 | 1502 | 56 | 63 | 56L |
| 71 | I, II, III | 87 | 415 | 25 | 1502 | 56 | 63 | 56L |
| 62 | I, II, III | 100 | 415 | 28 | 1502 | 56 | 63 | 56L |
| 54 | I, II, III | 114 | 415 | 31.5 | 1502 | 56 | 63 | 56L |
| 47 | I, II, III | 128 | 385 | 35.5 | 1503 | 56 | 63 | 56L |
| 43 | I, II, III | 142 | 385 | 40 | 1503 | 56 | 63 | 56L |
| 38 | I, II, III | 161 | 385 | 45 | 1503 | 56 | 63 | 56L |
| 35 | I, II, III | 174 | 385 | 50 | 1503 | 56 | 63 | 56L |
| 30 | I, II, III | 206 | 385 | 56 | 1503 | 56 | 63 | 56L |
| 27 | I, II | 225 | 385 | 63 | 1503 | 56 | 63 | 56L |
| 27 | III | 225 | 185 | 63 | 1603 | 56 | 63 | 56L |
| 25 | I, II | 247 | 385 | 71 | 1503 | 56 | 63 | 56L |
| 25 | III | 247 | 185 | 71 | 1603 | 56 | 63 | 56L |
| 22 | I, II | 278 | 385 | 80 | 1503 | 56 | 63 | 56L |
| 22 | III | 278 | 185 | 80 | 1603 | 56 | 63 | 56L |
| 20 | I, II | 307 | 385 | 90 | 1503 | 56 | 63 | 56L |
| 20 | III | 307 | 185 | 90 | 1603 | 56 | 63 | 56L |
| 18 | I | 342 | 385 | 100 | 1503 | 56 | 63 | 56L |
| 18 | II, III | 342 | 185 | 100 | 1603 | 56 | 63 | 56L |
| 16 | I | 385 | 385 | 112 | 1503 | 56 | 63 | 56L |
| 16 | II | 385 | 185 | 112 | 1603 | 56 | 63 | 56L |
| 14 | I | 436 | 385 | 125 | 1503 | 56 | 63 | 56L |
| 14 | II | 436 | 185 | 125 | 1603 | 56 | 63 | 56L |
| 12 | I, II | 500 | 185 | 140 | 1603 | 56 | 63 | 56L |
| 11 | I | 572 | 185 | 160 | 1603 | 56 | 63 | 56L |
| 11 | II | 572 | 600 | 160 | 1803 | 56 | 63 | 56L |
| 9.7 | I | 676 | 600 | 180 | 1803 | 56 | 63 | 56L |
| 8.6 | I | 765 | 600 | 200 | 1803 | 56 | 63 | 56L |
| 6.6 | I, II, III | 974 | 1610 | 250 | 1904 | 56 | 63 | 56L |
| 5.9 | I, II, III | 1150 | 1610 | 315 | 1904 | 56 | 63 | 56L |

3 Phase TEFC in 60 Hz 200-230/460V (T24) or 575V (T57)
 1 Phase TEFC are PSC 60 Hz 120/240V (TS12)
 DC are PM TENV for 90VDC (DC9)



1/6 HP

| Output RPM | AGMA Class | Output Torque In. Lbs. | OHL Lbs. | Nominal Ratio | Frame Size | | | |
|------------|------------|------------------------|----------|---------------|------------|---------|---------|-------|
| | | | | | Gear | Motor | | |
| | | | | | | 3 Phase | 1 Phase | DC PM |
| 529 | I, II, III | 17 | 294 | 3.15 | 1601 | 63 | 63 | 56VL |
| 413 | I, II, III | 22 | 304 | 4 | 1601 | 63 | 63 | 56VL |
| 370 | I, II, III | 24 | 319 | 4.5 | 1601 | 63 | 63 | 56VL |
| 337 | I, II, III | 26 | 330 | 5 | 1601 | 63 | 63 | 56VL |
| 304 | I, II, III | 29 | 341 | 5.6 | 1601 | 63 | 63 | 56VL |
| 272 | I, II, III | 33 | 353 | 6.3 | 1601 | 63 | 63 | 56VL |
| 241 | I, II, III | 37 | 365 | 7.1 | 1601 | 63 | 63 | 56VL |
| 218 | I, II, III | 41 | 380 | 8 | 1601 | 63 | 63 | 56VL |
| 192 | I, II, III | 45 | 395 | 9 | 1502 | 63 | 63 | 56VL |
| 177 | I, II, III | 49 | 415 | 10 | 1502 | 63 | 63 | 56VL |
| 150 | I, II, III | 58 | 415 | 11.2 | 1502 | 63 | 63 | 56VL |
| 137 | I, II, III | 63 | 415 | 12.5 | 1502 | 63 | 63 | 56VL |
| 125 | I, II, III | 69 | 415 | 14 | 1502 | 63 | 63 | 56VL |
| 111 | I, II, III | 78 | 415 | 16 | 1502 | 63 | 63 | 56VL |
| 101 | I, II, III | 87 | 415 | 18 | 1502 | 63 | 63 | 56VL |
| 91 | I, II, III | 96 | 415 | 20 | 1502 | 63 | 63 | 56VL |
| 81 | I, II, III | 108 | 415 | 22.4 | 1502 | 63 | 63 | 56VL |
| 71 | I, II, III | 123 | 415 | 25 | 1502 | 63 | 63 | 56VL |
| 62 | I, II, III | 141 | 415 | 28 | 1502 | 63 | 63 | 56VL |
| 54 | I, II, III | 161 | 415 | 31.5 | 1502 | 63 | 63 | 56VL |
| 47 | I, II, III | 181 | 385 | 35.5 | 1503 | 63 | 63 | 56VL |
| 43 | I, II | 200 | 385 | 40 | 1503 | 63 | 63 | 56VL |
| 43 | III | 200 | 185 | 40 | 1603 | 63 | 63 | 56VL |
| 38 | I, II | 227 | 385 | 45 | 1503 | 63 | 63 | 56VL |
| 38 | III | 227 | 185 | 45 | 1603 | 63 | 63 | 56VL |
| 35 | I, II | 246 | 385 | 50 | 1503 | 63 | 63 | 56VL |
| 35 | III | 246 | 185 | 50 | 1603 | 63 | 63 | 56VL |
| 30 | I, II | 290 | 385 | 56 | 1503 | 63 | 63 | 56VL |
| 30 | III | 290 | 185 | 56 | 1603 | 63 | 63 | 56VL |
| 27 | I | 317 | 385 | 63 | 1503 | 63 | 63 | 56VL |
| 27 | II, III | 317 | 185 | 63 | 1603 | 63 | 63 | 56VL |
| 25 | I | 347 | 385 | 71 | 1503 | 63 | 63 | 56VL |
| 25 | II, III | 347 | 185 | 71 | 1603 | 63 | 63 | 56VL |
| 22 | I | 391 | 385 | 80 | 1503 | 63 | 63 | 56VL |
| 22 | II | 391 | 185 | 80 | 1603 | 63 | 63 | 56VL |
| 22 | III | 391 | 600 | 80 | 1803 | 63 | 63 | 56VL |
| 20 | I | 433 | 385 | 90 | 1503 | 63 | 63 | 56VL |
| 20 | II | 433 | 185 | 90 | 1603 | 63 | 63 | 56VL |
| 18 | II, III | 482 | 185 | 100 | 1603 | 63 | 63 | 56VL |
| 16 | I | 541 | 185 | 112 | 1603 | 63 | 63 | 56VL |
| 16 | II | 541 | 600 | 112 | 1803 | 63 | 63 | 56VL |
| 14 | I | 611 | 185 | 125 | 1603 | 63 | 63 | 56VL |
| 12 | I | 713 | 600 | 140 | 1603 | 63 | 63 | 56VL |
| 7.8 | I, II, III | 1168 | 1610 | 224 | 1904 | 63 | 63 | 56VL |
| 6.9 | I, II, III | 1319 | 1610 | 250 | 1904 | 63 | 63 | 56VL |
| 6.6 | I, II, III | 1379 | 1610 | 280 | 1904 | 63 | 63 | 56VL |
| 5.9 | I, II, III | 1620 | 1610 | 315 | 1904 | 63 | 63 | 56VL |

3 Phase TEFC in 60 Hz 200-230/460V (T24) or 575V (T57)
 1 Phase TEFC are PSC 60 Hz 120/240V (TS12)
 DC are PM TENV for 90VDC (DC9)



| 1/4 HP | | | | | | | | |
|------------|------------|------------------------|----------|---------------|------------|---------|---------|-------|
| Output RPM | AGMA Class | Output Torque In. Lbs. | OHL Lbs. | Nominal Ratio | Frame Size | | | |
| | | | | | Gear | Motor | | |
| | | | | | | 3 Phase | 1 Phase | DC PM |
| 529 | I, II, III | 27 | 292 | 3.15 | 1601 | 63 | 71 | 63S |
| 413 | I, II, III | 34 | 301 | 4 | 1601 | 63 | 71 | 63S |
| 370 | I, II, III | 38 | 316 | 4.5 | 1601 | 63 | 71 | 63S |
| 337 | I, II, III | 42 | 328 | 5 | 1601 | 63 | 71 | 63S |
| 304 | I, II, III | 46 | 338 | 5.6 | 1601 | 63 | 71 | 63S |
| 272 | I, II, III | 52 | 349 | 6.3 | 1601 | 63 | 71 | 63S |
| 241 | I, II, III | 58 | 362 | 7.1 | 1601 | 63 | 71 | 63S |
| 218 | I, II, III | 64 | 376 | 8 | 1601 | 63 | 71 | 63S |
| 192 | I, II, III | 72 | 390 | 9 | 1502 | 63 | 71 | 63S |
| 177 | I, II, III | 78 | 415 | 10 | 1502 | 63 | 71 | 63S |
| 150 | I, II, III | 92 | 415 | 11.2 | 1502 | 63 | 71 | 63S |
| 137 | I, II, III | 100 | 415 | 12.5 | 1502 | 63 | 71 | 63S |
| 125 | I, II, III | 110 | 415 | 14 | 1502 | 63 | 71 | 63S |
| 111 | I, II, III | 124 | 415 | 16 | 1502 | 63 | 71 | 63S |
| 101 | I, II, III | 137 | 415 | 18 | 1502 | 63 | 71 | 63S |
| 91 | I, II, III | 152 | 415 | 20 | 1502 | 63 | 71 | 63S |
| 81 | I, II, III | 171 | 415 | 22.4 | 1502 | 63 | 71 | 63S |
| 71 | I, II | 194 | 415 | 25 | 1502 | 63 | 71 | 63S |
| 71 | III | 194 | 695 | 25 | 1602 | 63 | 71 | 63S |
| 62 | I, II | 222 | 415 | 28 | 1502 | 63 | 71 | 63S |
| 62 | III | 222 | 695 | 28 | 1602 | 63 | 71 | 63S |
| 54 | I | 254 | 415 | 31.5 | 1502 | 63 | 71 | 63S |
| 54 | II, III | 254 | 695 | 31.5 | 1602 | 63 | 71 | 63S |
| 47 | I | 285 | 385 | 35.5 | 1503 | 63 | 71 | 63S |
| 47 | II, III | 285 | 185 | 35.5 | 1603 | 63 | 71 | 63S |
| 43 | I | 316 | 385 | 40 | 1503 | 63 | 71 | 63S |
| 43 | II, III | 316 | 185 | 40 | 1603 | 63 | 71 | 63S |
| 38 | I | 358 | 385 | 45 | 1503 | 63 | 71 | 63S |
| 38 | II, III | 358 | 185 | 45 | 1603 | 63 | 71 | 63S |
| 35 | I | 388 | 385 | 50 | 1503 | 63 | 71 | 63S |
| 35 | II | 388 | 185 | 50 | 1603 | 63 | 71 | 63S |
| 35 | III | 388 | 600 | 50 | 1803 | 63 | 71 | 63S |
| 30 | I, II | 458 | 185 | 56 | 1603 | 63 | 71 | 63S |
| 27 | I, II | 500 | 185 | 63 | 1603 | 63 | 71 | 63S |
| 25 | I | 548 | 185 | 71 | 1603 | 63 | 71 | 63S |
| 25 | II | 548 | 600 | 71 | 1803 | 63 | 71 | 63S |
| 22 | I | 608 | 185 | 80 | 1603 | 63 | 71 | 63S |
| 20 | I | 670 | 185 | 90 | 1603 | 63 | 71 | 63S |
| 7.8 | I, II, III | 1717 | 1610 | 224 | 1904 | 63 | 71 | 63S |
| 6.9 | I, II, III | 1940 | 1610 | 250 | 1904 | 63 | 71 | 63S |
| 6.6 | I, II, III | 2015 | 1610 | 280 | 1904 | 63 | 71 | 63S |
| 5.9 | I, II | 2390 | 1610 | 315 | 1904 | 63 | 71 | 63S |

3 Phase TEFC in 60 Hz 200-230/460V (T24) or 575V (T57)
 1 Phase TEFC are PSC 60 Hz 120/240V (TS12)
 DC are PM TENV for 90VDC (DC9)



1/3 HP

| Output RPM | AGMA Class | Output Torque In. Lbs. | OHL Lbs. | Nominal Ratio | Frame Size | | | |
|------------|------------|------------------------|----------|---------------|------------|---------|---------|-------|
| | | | | | Gear | Motor | | |
| | | | | | | 3 Phase | 1 Phase | DC PM |
| 529 | I, II, III | 36 | 292 | 3.15 | 1601 | 71 | 71 | 63M |
| 413 | I, II, III | 46 | 301 | 4 | 1601 | 71 | 71 | 63M |
| 370 | I, II, III | 52 | 316 | 4.5 | 1601 | 71 | 71 | 63M |
| 337 | I, II, III | 57 | 328 | 5 | 1601 | 71 | 71 | 63M |
| 304 | I, II, III | 63 | 338 | 5.6 | 1601 | 71 | 71 | 63M |
| 272 | I, II, III | 71 | 349 | 6.3 | 1601 | 71 | 71 | 63M |
| 241 | I, II, III | 80 | 362 | 7.1 | 1601 | 71 | 71 | 63M |
| 218 | I, II, III | 86 | 376 | 8 | 1502 | 71 | 71 | 63M |
| 192 | I, II, III | 98 | 390 | 9 | 1502 | 71 | 71 | 63M |
| 177 | I, II, III | 106 | 415 | 10 | 1502 | 71 | 71 | 63M |
| 150 | I, II, III | 125 | 415 | 11.2 | 1502 | 71 | 71 | 63M |
| 137 | I, II, III | 137 | 415 | 12.5 | 1502 | 71 | 71 | 63M |
| 125 | I, II, III | 150 | 415 | 14 | 1502 | 71 | 71 | 63M |
| 111 | I, II, III | 169 | 415 | 16 | 1502 | 71 | 71 | 63M |
| 101 | I, II, III | 187 | 415 | 18 | 1502 | 71 | 71 | 63M |
| 91 | I, II | 208 | 415 | 20 | 1502 | 71 | 71 | 63M |
| 91 | III | 208 | 695 | 20 | 1602 | 71 | 71 | 63M |
| 81 | I, II | 234 | 415 | 22.4 | 1502 | 71 | 71 | 63M |
| 81 | III | 234 | 695 | 22.4 | 1602 | 71 | 71 | 63M |
| 71 | I, II | 265 | 415 | 25 | 1502 | 71 | 71 | 63M |
| 71 | III | 265 | 695 | 25 | 1602 | 71 | 71 | 63M |
| 62 | I | 304 | 415 | 28 | 1502 | 71 | 71 | 63M |
| 62 | II | 304 | 695 | 28 | 1602 | 71 | 71 | 63M |
| 62 | III | 304 | 600 | 28 | 1802 | 71 | 71 | 63M |
| 54 | I | 348 | 415 | 31.5 | 1502 | 71 | 71 | 63M |
| 54 | II | 348 | 695 | 31.5 | 1602 | 71 | 71 | 63M |
| 54 | III | 348 | 600 | 31.5 | 1802 | 71 | 71 | 63M |
| 47 | I | 390 | 385 | 35.5 | 1503 | 71 | 71 | 63M |
| 47 | II | 390 | 185 | 35.5 | 1603 | 71 | 71 | 63M |
| 47 | III | 390 | 1211 | 35.5 | 1802 | 71 | 71 | 63M |
| 43 | I, II | 432 | 185 | 40 | 1603 | 71 | 71 | 63M |
| 38 | I, II | 490 | 185 | 45 | 1603 | 71 | 71 | 63M |
| 35 | I | 530 | 185 | 50 | 1603 | 71 | 71 | 63M |
| 35 | II | 530 | 600 | 50 | 1803 | 71 | 71 | 63M |
| 30 | I | 575 | 185 | 56 | 1603 | 71 | 71 | 63M |
| 30 | II | 575 | 600 | 56 | 1803 | 71 | 71 | 63M |
| 27 | I | 639 | 185 | 63 | 1603 | 71 | 71 | 63M |
| 25 | I | 690 | 185 | 71 | 1603 | 71 | 71 | 63M |
| 7.8 | I, II | 2266 | 1610 | 224 | 1904 | 71 | 71 | 63M |
| 6.9 | I, II | 2562 | 1610 | 250 | 1904 | 71 | 71 | 63M |
| 6.6 | I, II | 2638 | 1610 | 280 | 1904 | 71 | 71 | 63M |
| 5.9 | I | 3157 | 1610 | 315 | 1904 | 71 | 71 | 63M |

3 Phase TEFC in 60 Hz 200-230/460V (T24) or 575V (T57)
 1 Phase TEFC are PSC 60 Hz 120/240V (TS12)
 DC are PM TEFC for 90VDC (DC9) or 180VDC (DC1)
 ** INTELLIGEAR TEFC - 3R/12 in 1/230V (TS2), 3/230V (T2), or 3/460V (T4) input power
 NOTE : For Other Speeds or Larger Capacity Requirements refer to Series 3000 Products



| 1/2 HP | | | | | | | | |
|------------|------------|------------------------|----------|---------------|------------|---------|---------|-------|
| Output RPM | AGMA Class | Output Torque In. Lbs. | OHL Lbs. | Nominal Ratio | Frame Size | | | |
| | | | | | Gear | Motor | | |
| | | | | | | 3 Phase | 1 Phase | DC PM |
| 529 | I, II, III | 56 | 178 | 3.15 | 1601 | 71 | 71 | 63M |
| 413 | I, II, III | 71 | 183 | 4 | 1601 | 71 | 71 | 63M |
| 370 | I, II, III | 80 | 190 | 4.5 | 1601 | 71 | 71 | 63M |
| 337 | I, II, III | 88 | 196 | 5 | 1601 | 71 | 71 | 63M |
| 304 | I, II | 97 | 201 | 5.6 | 1601 | 71 | 71 | 63M |
| 272 | I, II | 108 | 207 | 6.3 | 1601 | 71 | 71 | 63M |
| 241 | I, II, III | 120 | 415 | 7.1 | 1502 | 71 | 71 | 63M |
| 218 | I, II, III | 133 | 415 | 8 | 1502 | 71 | 71 | 63M |
| 192 | I, II | 151 | 415 | 9 | 1502 | 71 | 71 | 63M |
| 192 | III | 151 | 695 | 9 | 1602 | 71 | 71 | 63M |
| 177 | I, II | 163 | 415 | 10 | 1502 | 71 | 71 | 63M |
| 177 | III | 163 | 695 | 10 | 1602 | 71 | 71 | 63M |
| 150 | I, II | 192 | 415 | 11.2 | 1502 | 71 | 71 | 63M |
| 150 | III | 192 | 695 | 11.2 | 1602 | 71 | 71 | 63M |
| 137 | I, II | 210 | 415 | 12.5 | 1502 | 71 | 71 | 63M |
| 137 | III | 210 | 695 | 12.5 | 1602 | 71 | 71 | 63M |
| 125 | I, II | 230 | 415 | 14 | 1502 | 71 | 71 | 63M |
| 125 | III | 230 | 695 | 14 | 1602 | 71 | 71 | 63M |
| 111 | I | 259 | 415 | 16 | 1502 | 71 | 71 | 63M |
| 111 | II | 259 | 695 | 16 | 1602 | 71 | 71 | 63M |
| 101 | I | 287 | 415 | 18 | 1502 | 71 | 71 | 63M |
| 101 | II | 287 | 695 | 18 | 1602 | 71 | 71 | 63M |
| 91 | I | 320 | 415 | 20 | 1502 | 71 | 71 | 63M |
| 91 | II | 320 | 695 | 20 | 1602 | 71 | 71 | 63M |
| 81 | I | 359 | 415 | 22.4 | 1502 | 71 | 71 | 63M |
| 81 | II | 359 | 695 | 22.4 | 1602 | 71 | 71 | 63M |
| 71 | I | 407 | 695 | 25 | 1602 | 71 | 71 | 63M |
| 62 | I | 467 | 695 | 28 | 1602 | 71 | 71 | 63M |
| 54 | I | 534 | 695 | 31.5 | 1602 | 71 | 71 | 63M |
| 54 | II | 534 | 600 | 31.5 | 1802 | 71 | 71 | 63M |
| 47 | I | 603 | 185 | 35.5 | 1603 | 71 | 71 | 63M |
| 43 | I | 660 | 185 | 40 | 1603 | 71 | 71 | 63M |
| 38 | I | 709 | 185 | 45 | 1603 | 71 | 71 | 63M |
| 35 | I | 760 | 600 | 50 | 1803 | 71 | 71 | 63M |
| 7.8 | I | 3555 | 1610 | 224 | 1904 | 71 | 71 | 63M |
| 6.9 | I | 4019 | 1610 | 250 | 1904 | 71 | 71 | 63M |

3 Phase TEFC in 60 Hz 200-230/460V (T24) or 575V (T57)

1 Phase TEFC are PSC 60 Hz 120/240V (TS12)

DC are PM TEFC for 90VDC (DC9) or 180VDC (DC1)

** INTELLIGEAR TEFC - 3R/12 in 1/230V (TS2), 3/230V (T2), or 3/460V (T4) input power

NOTE : For Other Speeds or Larger Capacity Requirements refer to Series 3000 Products



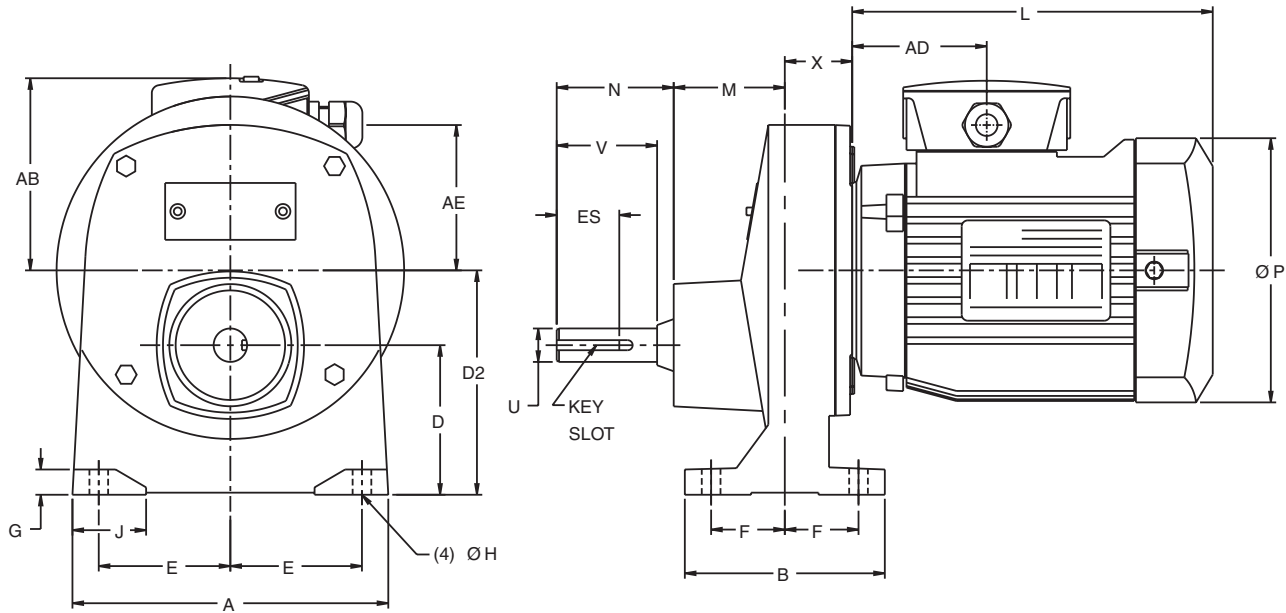
3/4 HP

| Output RPM | AGMA Class | Output Torque In. Lbs. | OHL Lbs. | Nominal Ratio | Frame Size | | |
|------------|------------|------------------------|----------|---------------|------------|---------|-------|
| | | | | | Gear | Motor | |
| | | | | | | 3 Phase | DC PM |
| 529 | I, II, III | 85 | 169 | 3.15 | 1601 | 71 | 63L |
| 413 | I, II, III | 109 | 180 | 4 | 1601 | 71 | 63L |
| 370 | I, II | 121 | 185 | 4.5 | 1601 | 71 | 63L |
| 337 | I, II | 133 | 189 | 5 | 1601 | 71 | 63L |
| 304 | I | 148 | 192 | 5.6 | 1601 | 71 | 63L |
| 272 | I | 165 | 192 | 6.3 | 1601 | 71 | 63L |
| 241 | I, II | 183 | 415 | 7.1 | 1502 | 71 | 63L |
| 241 | III | 183 | 695 | 7.1 | 1602 | 71 | 63L |
| 218 | I, II | 202 | 415 | 8 | 1502 | 71 | 63L |
| 218 | III | 202 | 695 | 8 | 1602 | 71 | 63L |
| 192 | I | 230 | 415 | 9 | 1502 | 71 | 63L |
| 192 | II | 230 | 695 | 9 | 1602 | 71 | 63L |
| 177 | I | 248 | 415 | 10 | 1502 | 71 | 63L |
| 177 | II | 248 | 695 | 10 | 1602 | 71 | 63L |
| 150 | I | 293 | 415 | 11.2 | 1502 | 71 | 63L |
| 150 | II | 293 | 695 | 11.2 | 1602 | 71 | 63L |
| 137 | I | 320 | 415 | 12.5 | 1502 | 71 | 63L |
| 137 | II | 320 | 695 | 12.5 | 1602 | 71 | 63L |
| 125 | I, II | 351 | 695 | 14 | 1602 | 71 | 63L |
| 111 | I | 395 | 695 | 16 | 1602 | 71 | 63L |
| 101 | I | 438 | 695 | 18 | 1602 | 71 | 63L |
| 91 | I | 487 | 695 | 20 | 1602 | 71 | 63L |

3 Phase TEFC in 60 Hz 200-230/460V (T24) or 575V (T57)
 1 Phase TEFC are PSC 60 Hz 120/240V (TS12)
 DC are PM TEFC for 90VDC (DC9) or 180VDC (DC1)
 ** INTELLIGEAR TEFC - 3R/12 in 1/230V (TS2), 3/230V (T2), or 3/460V (T4) input power
 NOTE : For Other Speeds or Larger Capacity Requirements refer to Series 3000 Products



FOOT MOUNT • THREE PHASE



SINGLE REDUCTION

| BASIC FRAME | A | B | D | D2 | E | ES | F | G | H | J | M | N | U | KEY SLOT | V | X |
|-------------|------|------|------|------|------|------|------|------|------|------|------|------|-------|----------|------|------|
| 1601 | 5.91 | 3.74 | 2.80 | 4.19 | 2.46 | 1.31 | 1.38 | 0.47 | 0.35 | 1.24 | 2.08 | 2.19 | 0.625 | 3/16 Sq. | 1.88 | 1.34 |

BASIC MOTOR FRAME

| Frame | AB | AD | AE | P | "L (No Brake)" | "L (With Brake)" |
|-----------------|------|------|------|------|----------------|------------------|
| 56 | 3.74 | 2.11 | 2.87 | 4.33 | 6.14 | 7.99 |
| 63 | 3.94 | 2.50 | 3.06 | 4.96 | 6.77 | 8.47 |
| 71 | 4.33 | 2.64 | 3.43 | 5.51 | 7.30 | 9.04 |
| 71 ⁵ | 4.33 | 2.64 | 3.43 | 5.51 | 7.61 | 9.35 |

¹ All rough casting dimensions may vary by .25" due to casting variations.

² Shaft extension tolerance: +.0000"; -.0005" up to 1.5" diameter inclusive.

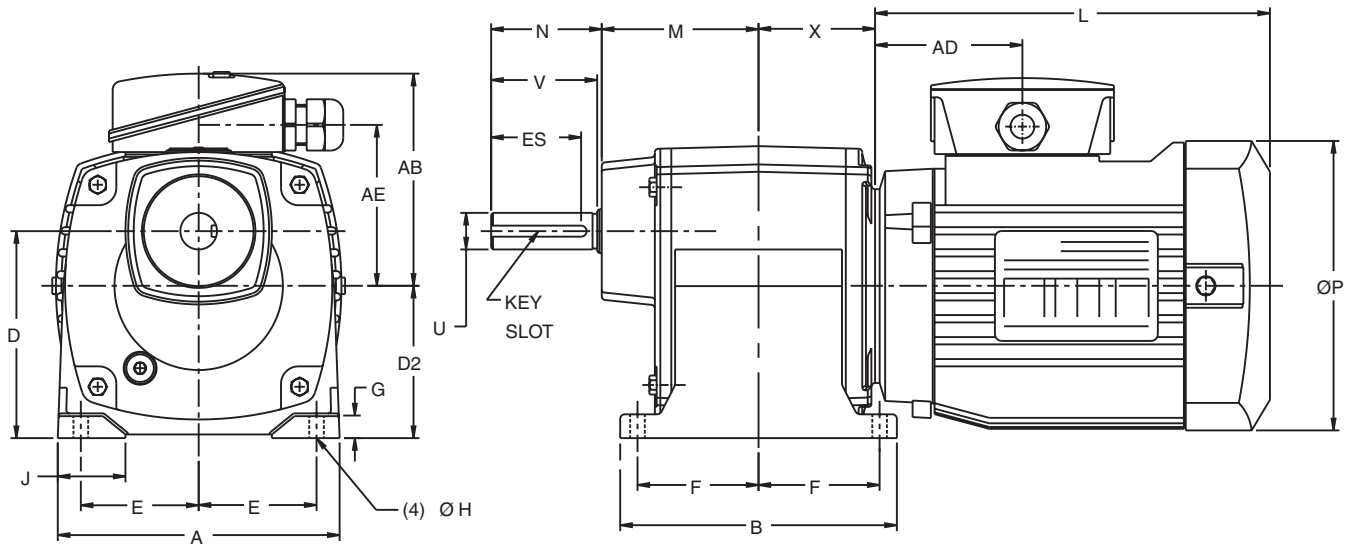
³ Conduit box may be located on either side or on top of motor. Conduit openings may be located in steps of 90° regardless of location.

⁴ Largest motor width.

⁵ This data applies for 0.75 HP motors only.



FOOT MOUNT • THREE PHASE



DOUBLE, TRIPLE, AND QUAD REDUCTION

| BASIC FRAME | A | B | D | D2 | E | ES | F | G | H | J | M | N | U | KEY SLOT | V | X |
|-------------|------|------|------|------|------|------|------|------|------|------|------|------|-------|----------|------|------|
| 1502,03,04 | 4.72 | 4.81 | 3.54 | 2.60 | 1.97 | 1.31 | 2.07 | 0.39 | 0.28 | 1.14 | 2.68 | 1.89 | 0.625 | 3/16 Sq. | 1.81 | 1.99 |
| 1602 | 5.91 | 5.12 | 2.80 | 2.80 | 2.46 | 1.31 | 2.07 | 0.47 | 0.35 | 1.24 | 2.94 | 1.83 | 0.750 | 3/16 Sq. | 1.75 | 1.50 |
| 1603 | 5.91 | 5.91 | 2.80 | 2.80 | 2.46 | 1.31 | 2.46 | 0.47 | 0.35 | 1.24 | 3.32 | 1.83 | 0.750 | 3/16 Sq. | 1.75 | 1.90 |
| 1802 | 5.90 | 4.92 | 2.95 | 3.23 | 2.46 | 1.48 | 2.07 | 0.51 | 0.35 | 1.24 | 2.85 | 1.83 | 0.750 | 3/16 Sq. | 1.75 | 1.63 |
| 1803 | 5.90 | 5.71 | 2.95 | 3.23 | 2.46 | 1.48 | 2.47 | 0.51 | 0.35 | 1.24 | 3.25 | 1.83 | 0.750 | 3/16 Sq. | 1.75 | 2.03 |

| BASIC MOTOR FRAME | | | | | | |
|-------------------|------|------|------|------|----------------|------------------|
| Frame | AB | AD | AE | P | "L (No Brake)" | "L (With Brake)" |
| 56 | 3.74 | 2.11 | 2.87 | 4.33 | 6.14 | 7.99 |
| 63 | 3.94 | 2.50 | 3.06 | 4.96 | 6.77 | 8.47 |
| 71 | 4.33 | 2.64 | 3.43 | 5.51 | 7.30 | 9.04 |
| 71 ⁵ | 4.33 | 2.64 | 3.43 | 5.51 | 7.61 | 9.35 |

¹ For 1500 frame gearmotors with 71 frame motors, the motor fan is .106 inches below the plane of the reducer feet.

² All rough casting dimensions may vary by .25" due to casting variations.

³ Shaft extension tolerance: +.0000"; -.0005" up to 1.5" diameter inclusive.

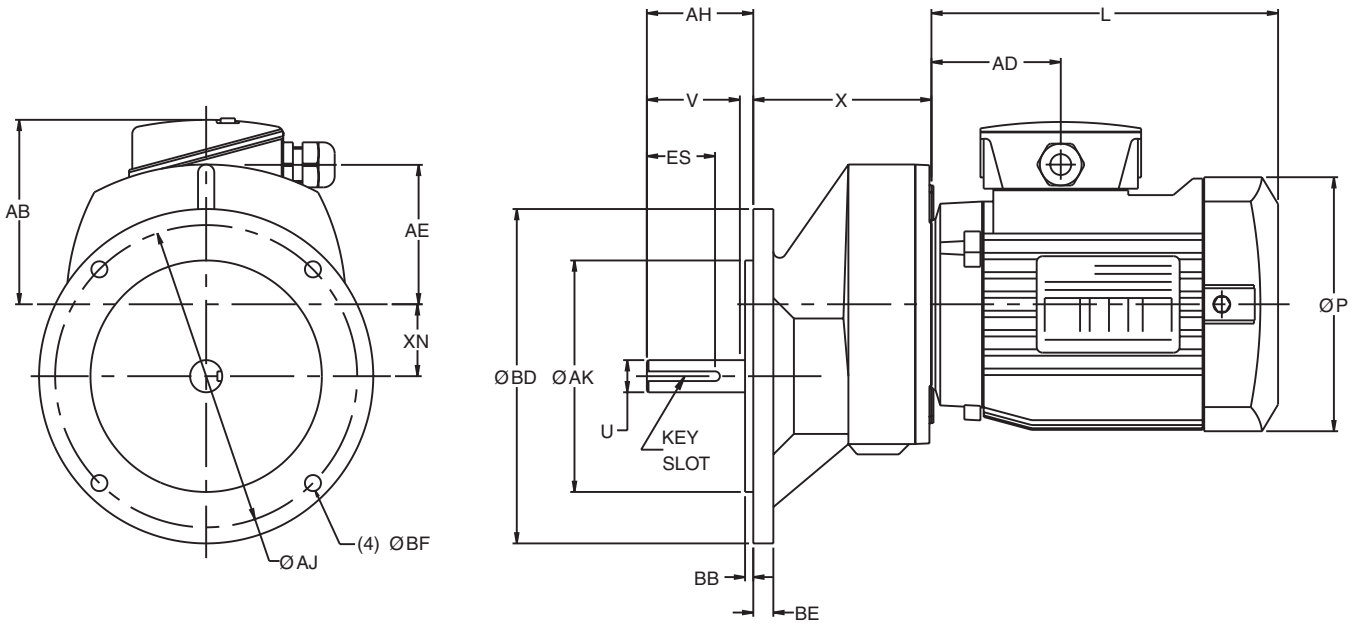
⁴ Conduit box may be located on either side or on top of motor. Conduit openings may be located in steps of 90° regardless of location.

⁵ This data applies for 0.75 HP motors only.

⁶ Increases "L" and "C" by 0.32" if horsepower is .75.



56C FLANGED MOUNT • THREE PHASE



SINGLE REDUCTION

| BASIC FRAME | AH | AJ | AK | BB | BD | BE | BF | ES | U | KEY SLOT | V | X | XN |
|-------------|------|------|-------|------|------|------|--------|------|-------|----------|------|------|------|
| 1601 | 2.07 | 5.88 | 4.500 | 0.16 | 6.50 | 0.39 | 3/8-16 | 1.31 | 0.625 | 3/16 Sq. | 1.91 | 3.54 | 1.39 |

BASIC MOTOR FRAME

| Frame | AB | AD | AE | P | "L (No Brake)" | "L (With Brake)" |
|-----------------|------|------|------|------|----------------|------------------|
| 56 | 3.74 | 2.11 | 2.87 | 4.33 | 6.14 | 7.99 |
| 63 | 3.94 | 2.50 | 3.06 | 4.96 | 6.77 | 8.47 |
| 71 | 4.33 | 2.64 | 3.43 | 5.51 | 7.30 | 9.04 |
| 71 ⁵ | 4.33 | 2.64 | 3.43 | 5.51 | 7.61 | 9.35 |

¹ All rough casting dimensions may vary by .25" due to casting variations.

² Shaft extension tolerance: +.0000"; -.0005" up to 1.5" diameter inclusive.

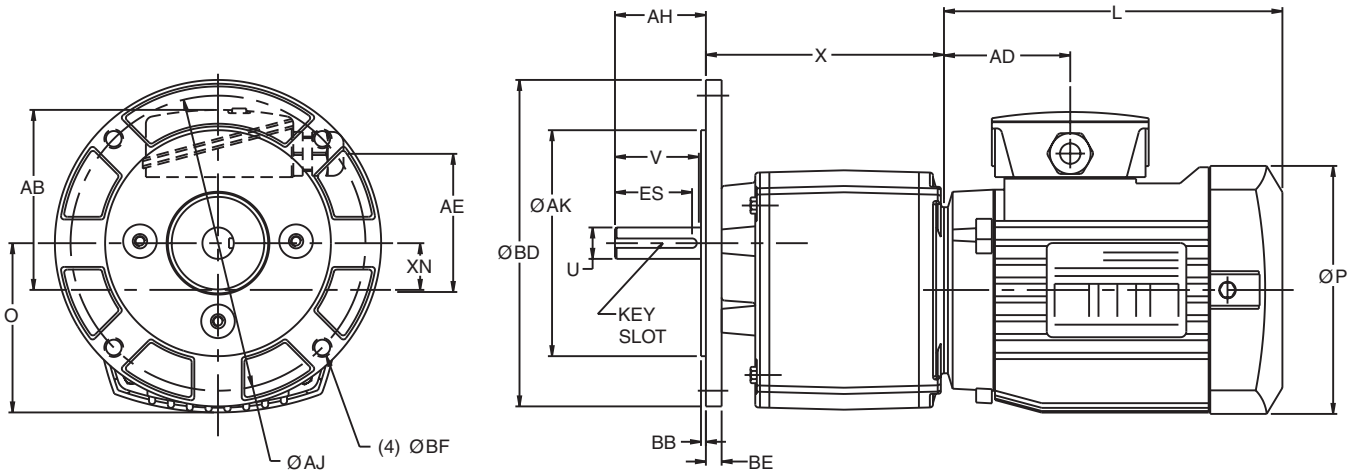
³ Conduit box may be located on either side or on top of motor. Conduit openings may be located in steps of 90° regardless of location.

⁴ Largest motor width.

⁵ This data applies for 0.75 HP motors only.



56C FLANGED MOUNT • THREE PHASE



DOUBLE, TRIPLE, AND QUAD REDUCTION

| BASIC FRAME | AH | AJ | AK | BB | BD | BE | BF | ES | O | U | KEY SLOT | V | X | XN |
|-------------|------|-------|-------|------|------|------|--------|------|------|-------|----------|------|------|-------|
| 1502,03,04 | 1.81 | 5.875 | 4.500 | 0.10 | 6.50 | 0.32 | 3/8-16 | 1.31 | 3.31 | 0.625 | 3/16 Sq. | 1.71 | 4.74 | 0.93 |
| 1602 | 2.06 | 5.875 | 4.500 | 0.16 | 6.50 | 0.32 | 3/8-16 | 1.31 | 3.25 | 0.625 | 3/16 Sq. | 1.71 | 4.74 | 0 |
| 1603 | 2.06 | 5.875 | 4.500 | 0.16 | 6.50 | 0.32 | 3/8-16 | 1.31 | 3.25 | 0.625 | 3/16 Sq. | 1.91 | 5.22 | 0 |
| 1802 | 2.06 | 5.875 | 4.500 | 0.12 | 6.50 | 0.39 | 3/8-16 | 1.48 | 2.48 | 0.625 | 3/16 Sq. | 1.88 | 4.65 | -0.28 |
| 1803 | 2.06 | 5.875 | 4.500 | 0.12 | 6.50 | 0.39 | 3/8-16 | 1.48 | 2.48 | 0.625 | 3/16 Sq. | 1.88 | 5.43 | -0.28 |

| BASIC MOTOR FRAME | | | | | | |
|-------------------|------|------|------|------|----------------|------------------|
| Frame | AB | AD | AE | P | "L (No Brake)" | "L (With Brake)" |
| 56 | 3.74 | 2.11 | 2.87 | 4.33 | 6.14 | 7.99 |
| 63 | 3.94 | 2.50 | 3.06 | 4.96 | 6.77 | 8.47 |
| 71 | 4.33 | 2.64 | 3.43 | 5.51 | 7.30 | 9.04 |
| 71 ⁵ | 4.33 | 2.64 | 3.43 | 5.51 | 7.61 | 9.35 |

¹ All rough casting dimensions may vary by .25" due to casting variations.

² Shaft extension tolerance: +.0000"; -.0005" up to 1.5" diameter inclusive.

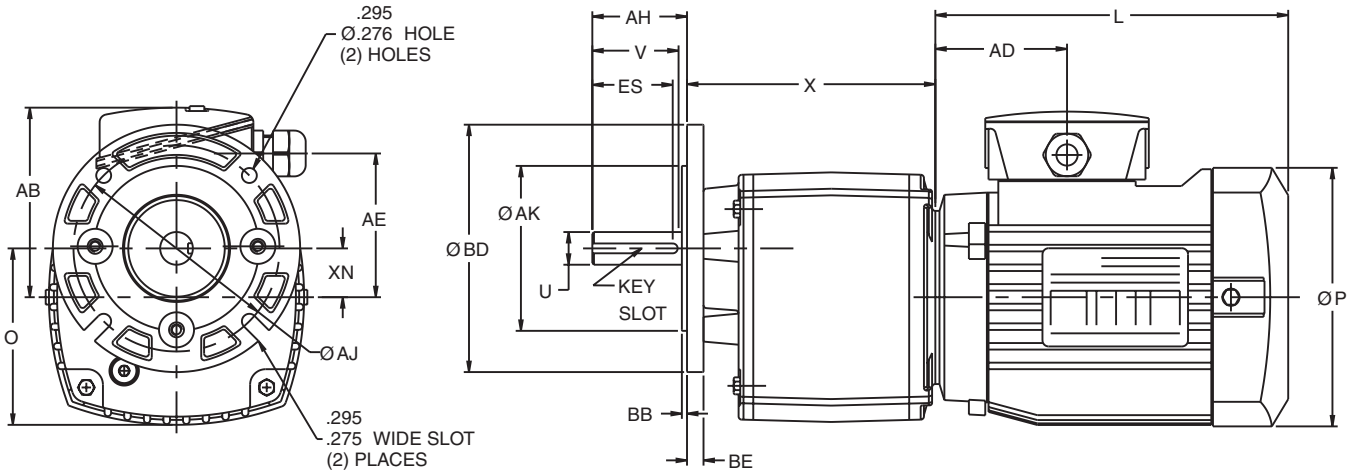
³ Conduit box may be located on either side or on top of motor. Conduit openings may be located in steps of 90° regardless of location.

⁴ Largest motor width.

⁵ This data applies for 0.75 HP motors only.



BS FLANGED MOUNT • THREE PHASE



DOUBLE, TRIPLE, AND QUAD REDUCTION

| BASIC FRAME | AH | AJ | AK | BB | BD | BE | ES | O | U | KEY SLOT | V | X | XN |
|-------------|------|------|------|------|------|------|------|------|-------|----------|------|------|-------|
| 1502,03,04 | 1.81 | 3.94 | 3.15 | 0.10 | 4.72 | 0.32 | 1.31 | 3.32 | 0.625 | 3/16 Sq. | 1.71 | 4.74 | 0.93 |
| 1802 | 2.06 | 4.53 | 3.74 | 0.12 | 5.51 | 0.31 | 1.48 | 2.48 | 0.625 | 3/16 Sq. | 1.88 | 4.65 | -0.28 |
| 1803 | 2.06 | 4.53 | 3.74 | 0.12 | 5.51 | 0.31 | 1.48 | 2.48 | 0.625 | 3/16 Sq. | 1.88 | 5.43 | -0.28 |

BASIC MOTOR FRAME

| Frame | AB | AD | AE | P | "L (No Brake)" | "L (With Brake)" |
|-----------------|------|------|------|------|----------------|------------------|
| 56 | 3.74 | 2.11 | 2.87 | 4.33 | 6.14 | 7.99 |
| 63 | 3.94 | 2.50 | 3.06 | 4.96 | 6.77 | 8.47 |
| 71 | 4.33 | 2.64 | 3.43 | 5.51 | 7.30 | 9.04 |
| 71 ⁵ | 4.33 | 2.64 | 3.43 | 5.51 | 7.61 | 9.35 |

¹ All rough casting dimensions may vary by .25" due to casting variations.

² Shaft extension tolerance: +.0000"; -.0005" up to 1.5" diameter inclusive.

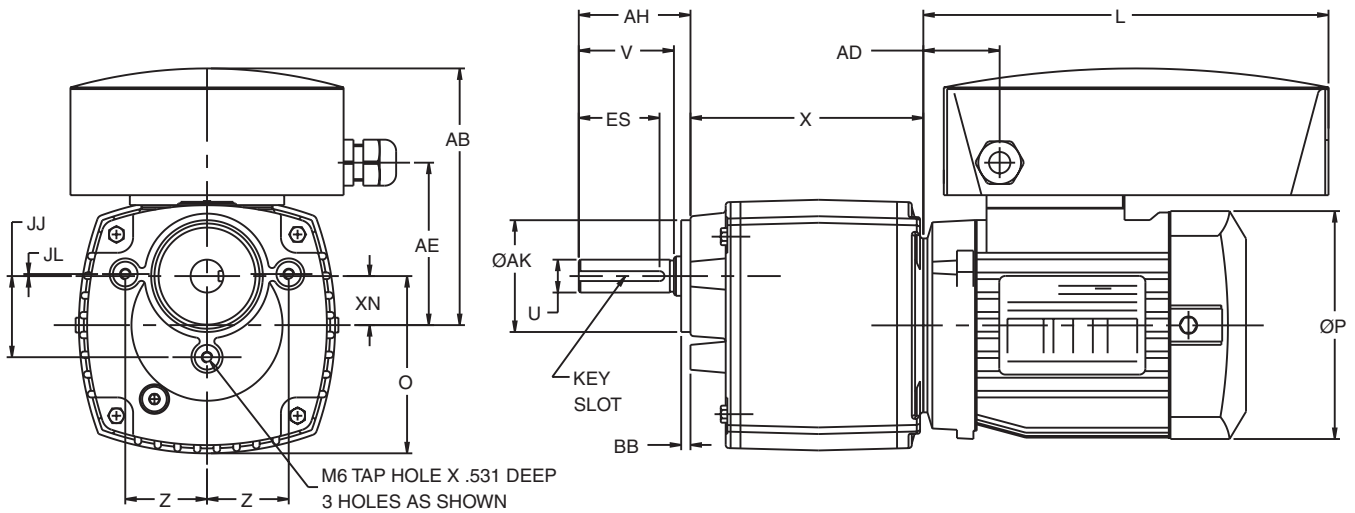
³ Conduit box may be located on either side or on top of motor. Conduit openings may be located in steps of 90° regardless of location.

⁴ Largest motor width.

⁵ This data applies for 0.75 HP motors only.



B14 FACE MOUNT • THREE PHASE



DOUBLE, TRIPLE, AND QUAD REDUCTION

| BASIC FRAME | AH | AK | BB | ES | JJ | JL | U | KEY SLOT | V | X | XN | Z |
|-------------|------|-------|------|------|------|------|-------|----------|------|------|------|------|
| 1502,03,04 | 2.13 | 2.126 | 0.18 | 1.31 | 1.54 | 0.04 | 0.625 | 3/16 Sq. | 1.81 | 4.30 | 0.93 | 1.56 |

| BASIC MOTOR FRAME | | | | | | |
|-------------------|------|------|------|------|----------------|------------------|
| Frame | AB | AD | AE | P | "L (No Brake)" | "L (With Brake)" |
| 56 | 3.74 | 2.11 | 2.87 | 4.33 | 6.14 | 7.99 |
| 63 | 3.94 | 2.50 | 3.06 | 4.96 | 6.77 | 8.47 |
| 71 | 4.33 | 2.64 | 3.43 | 5.51 | 7.30 | 9.04 |
| 71 ⁵ | 4.33 | 2.64 | 3.43 | 5.51 | 7.61 | 9.35 |

¹ All rough casting dimensions may vary by .25" due to casting variations.

² Shaft extension tolerance: +.0000"; -.0005" up to 1.5" diameter inclusive.

³ Conduit box may be located on either side or on top of motor. Conduit openings may be located in steps of 90° regardless of location.

⁴ Largest motor width.

⁵ This data applies for 0.75 HP motors only.



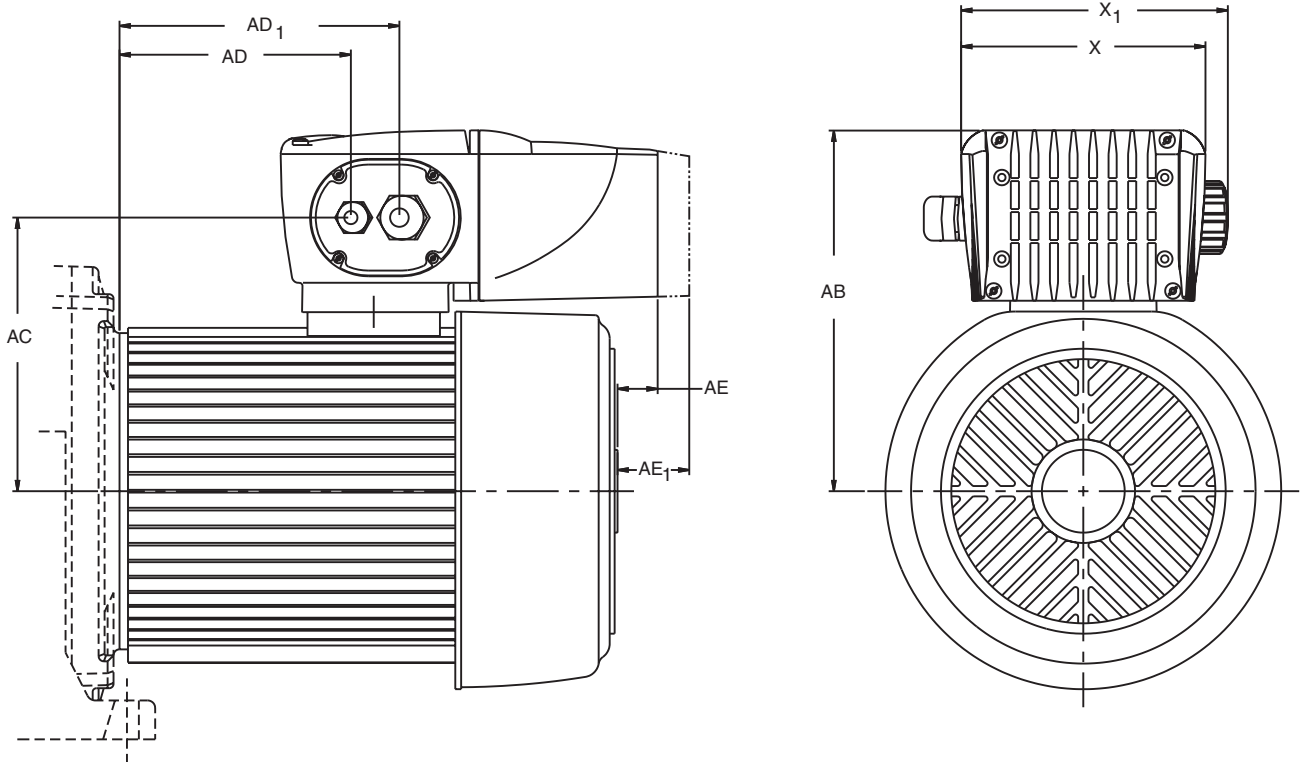
VARIABLE SPEED GEARMOTORS



Weights and Dimensions

| Motor Frame | INTELLIGEAR Drive Size | Dimension (inches) | | | | | | | | Drive Added Weight (lb.) |
|-------------|------------------------|--------------------|------|------|------|------|------|------|------|--------------------------|
| | | AB | AC | AD | AD1 | AE | AE1 | X | X1 | |
| 71 * | 21 or 21M | 6.91 | 4.81 | 2.04 | 3.22 | 1.58 | 2.17 | 5.91 | 6.45 | 7 |

* Reduce AE and AE1 by .32" if motor HP is .75.
 AE1 includes braking resistor installed.

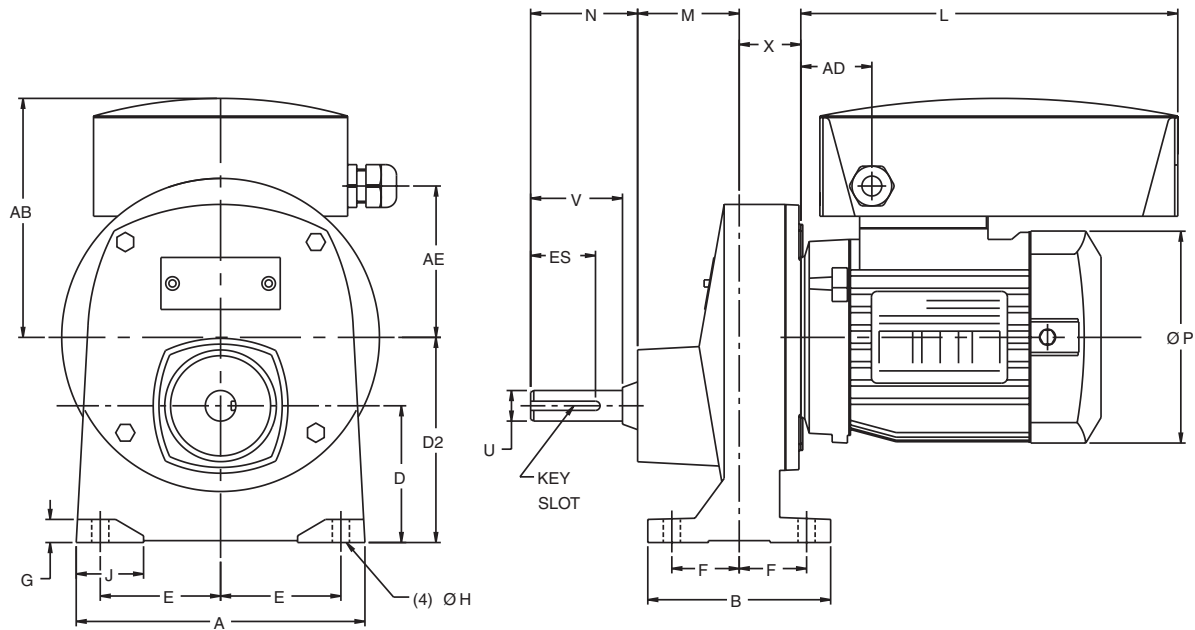


Intelligear Selection

| INPUT POWER Phase/Voltage | MOTOR HP @ MAX. Hz. |
|------------------------------|---------------------|
| | |
| 1/230 | 21M |
| 3/230 | 21 |
| 3/460 | 21 |



FOOT MOUNT • SINGLE PHASE



SINGLE REDUCTION

| BASIC FRAME | A | B | D | D2 | E | ES | F | G | H | J | M | N | U | KEY SLOT | V | X |
|-------------|------|------|------|------|------|------|------|------|------|------|------|------|-------|----------|------|------|
| 1601 | 5.91 | 3.74 | 2.80 | 4.19 | 2.46 | 1.31 | 1.38 | 0.47 | 0.35 | 1.24 | 2.08 | 2.19 | 0.625 | 3/16 Sq. | 1.88 | 1.34 |

BASIC MOTOR FRAME
NO BRAKE

| Frame | AB | AD | AE | P | L |
|-------|------|------|------|------|------|
| 56 | 4.88 | 1.45 | 3.08 | 4.33 | 7.71 |
| 63 | 5.07 | 1.85 | 3.28 | 4.96 | 8.11 |
| 71 | 5.51 | 1.85 | 3.72 | 5.44 | 8.11 |

¹ All rough casting dimensions may vary by .25" due to casting variations.

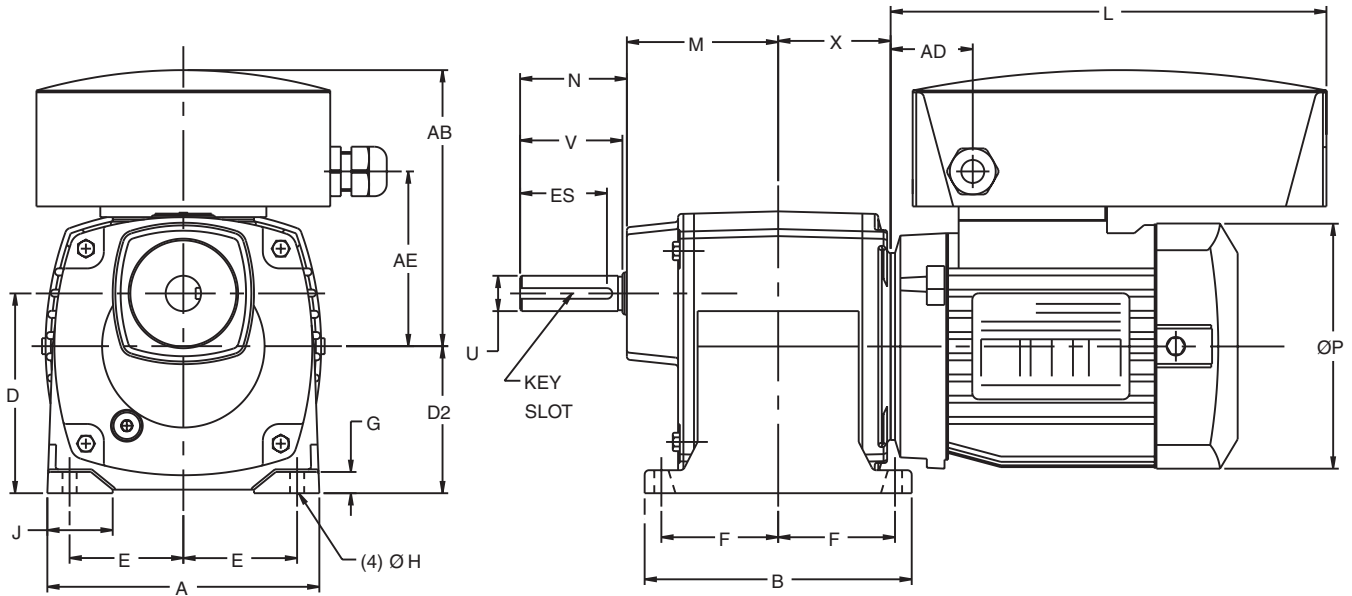
² Shaft extension tolerance: +.0000"; -.0005" up to 1.5" diameter inclusive.

³ Conduit box may be located on either side or on top of motor. Conduit openings may be located in steps of 90° regardless of location.

⁴ Largest motor width.



FOOT MOUNT • SINGLE PHASE



DOUBLE, TRIPLE, AND QUAD REDUCTION

| BASIC FRAME | A | B | D | D2 | E | ES | F | G | H | J | M | N | U | KEY SLOT | V | X |
|-------------|------|------|------|------|------|------|------|------|------|------|------|------|-------|----------|------|------|
| 1502,03,04 | 4.72 | 4.81 | 3.54 | 2.60 | 1.97 | 1.31 | 2.07 | 0.39 | 0.28 | 1.14 | 2.68 | 1.89 | 0.625 | 3/16 Sq. | 1.81 | 1.99 |
| 1602 | 5.91 | 5.12 | 2.80 | 2.80 | 2.46 | 1.31 | 2.07 | 0.47 | 0.35 | 1.24 | 2.94 | 1.83 | 0.750 | 3/16 Sq. | 1.75 | 1.50 |
| 1603 | 5.91 | 5.91 | 2.80 | 2.80 | 2.46 | 1.31 | 2.46 | 0.47 | 0.35 | 1.24 | 3.32 | 1.83 | 0.750 | 3/16 Sq. | 1.75 | 1.90 |
| 1802 | 5.90 | 4.92 | 2.95 | 3.23 | 2.46 | 1.48 | 2.07 | 0.51 | 0.35 | 1.24 | 2.85 | 1.83 | 0.750 | 3/16 Sq. | 1.75 | 1.63 |
| 1803 | 5.90 | 5.71 | 2.95 | 3.23 | 2.46 | 1.48 | 2.47 | 0.51 | 0.35 | 1.24 | 3.25 | 1.83 | 0.750 | 3/16 Sq. | 1.75 | 2.03 |

**BASIC MOTOR FRAME
NO BRAKE**

| Frame | AB | AD | AE | P | L |
|-------|------|------|------|------|------|
| 56 | 4.88 | 1.45 | 3.08 | 4.33 | 7.71 |
| 63 | 5.07 | 1.85 | 3.28 | 4.96 | 8.11 |
| 71 | 5.51 | 1.85 | 3.72 | 5.44 | 8.11 |

¹ For 1500 frame gearmotors with 71 frame motors, the motor fan cover is .106 inches below the plane of the reducer feet.

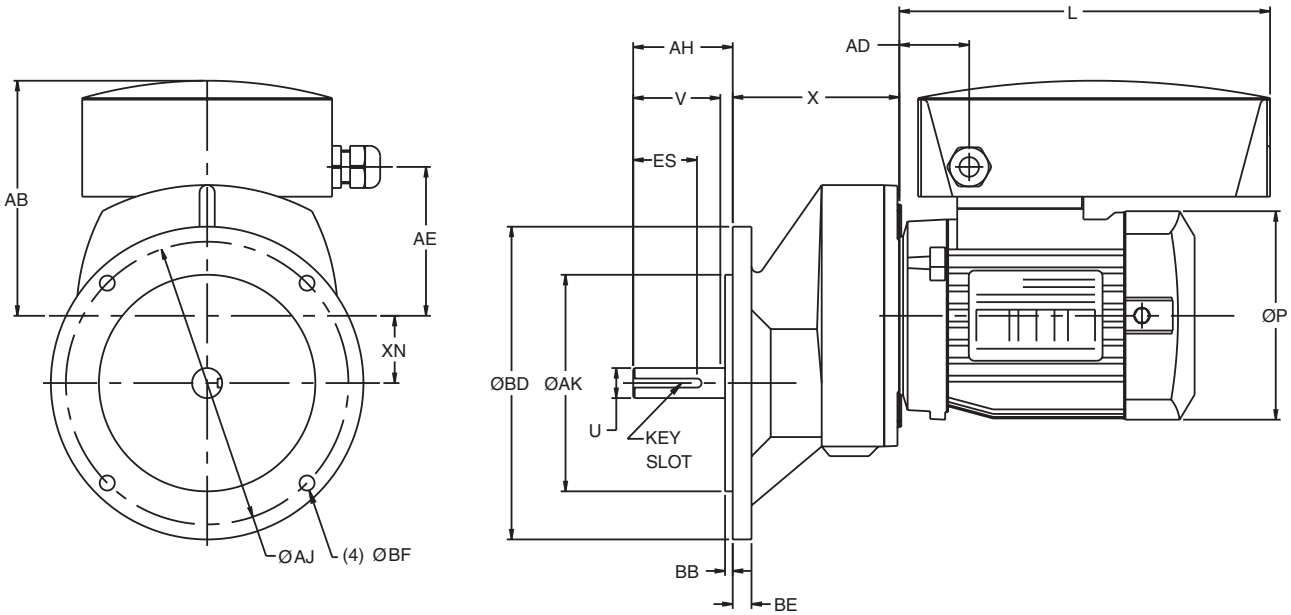
² All rough casting dimensions may vary by .25" due to casting variations.

³ Shaft extension tolerance: +.0000"; -.0005" up to 1.5" diameter inclusive.

⁴ Conduit box may be located on either side (except 1602, 1603 sizes) or on top of motor. FX ok for 1502, 1503 only.



56C FLANGED MOUNT • SINGLE PHASE



SINGLE REDUCTION

| BASIC FRAME | AH | AJ | AK | BB | BD | BE | BF | ES | U | KEY SLOT | V | X | XN |
|-------------|------|------|-------|------|------|------|--------|------|-------|----------|------|------|------|
| 1601 | 2.07 | 5.88 | 4.500 | 0.16 | 6.50 | 0.39 | 3/8-16 | 1.31 | 0.625 | 3/16 Sq. | 1.91 | 3.54 | 1.39 |

| BASIC MOTOR FRAME NO BRAKE | | | | | |
|-------------------------------|------|------|------|------|------|
| Frame | AB | AD | AE | P | L |
| 56 | 4.88 | 1.45 | 3.08 | 4.33 | 7.71 |
| 63 | 5.07 | 1.85 | 3.28 | 4.96 | 8.11 |
| 71 | 5.51 | 1.85 | 3.72 | 5.44 | 8.11 |

¹ All rough casting dimensions may vary by .25" due to casting variations.

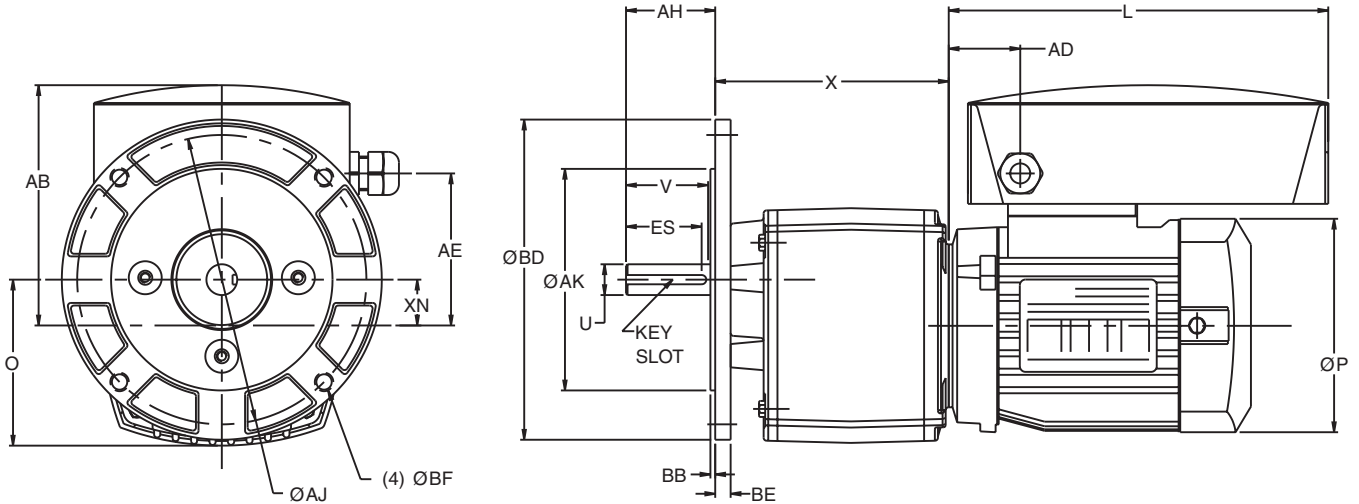
² Shaft extension tolerance: +.0000"; -.0005" up to 1.5" diameter inclusive.

³ Conduit box may be located on either side or on top of motor.

⁴ Largest motor width.



56C FLANGED MOUNT • SINGLE PHASE



DOUBLE, TRIPLE, AND QUAD REDUCTION

| BASIC FRAME | AH | AJ | AK | BB | BD | BE | BF | ES | O | U | KEY SLOT | V | X | XN |
|-------------|------|-------|-------|------|------|------|--------|------|------|-------|----------|------|------|-------|
| 1502,03,04 | 1.81 | 5.875 | 4.500 | 0.10 | 6.50 | 0.32 | 3/8-16 | 1.31 | 3.31 | 0.625 | 3/16 Sq. | 1.71 | 4.74 | 0.93 |
| 1602 | 2.06 | 5.875 | 4.500 | 0.16 | 6.50 | 0.32 | 3/8-16 | 1.31 | 3.25 | 0.625 | 3/16 Sq. | 1.71 | 4.74 | 0 |
| 1603 | 2.06 | 5.875 | 4.500 | 0.16 | 6.50 | 0.32 | 3/8-16 | 1.31 | 3.25 | 0.625 | 3/16 Sq. | 1.91 | 5.22 | 0 |
| 1802 | 2.06 | 5.875 | 4.500 | 0.12 | 6.50 | 0.39 | 3/8-16 | 1.48 | 2.48 | 0.625 | 3/16 Sq. | 1.88 | 4.65 | -0.28 |
| 1803 | 2.06 | 5.875 | 4.500 | 0.12 | 6.50 | 0.39 | 3/8-16 | 1.48 | 2.48 | 0.625 | 3/16 Sq. | 1.88 | 5.43 | -0.28 |

BASIC MOTOR FRAME
NO BRAKE

| Frame | AB | AD | AE | P | L |
|-------|------|------|------|------|------|
| 56 | 4.88 | 1.45 | 3.08 | 4.33 | 7.71 |
| 63 | 5.07 | 1.85 | 3.28 | 4.96 | 8.11 |
| 71 | 5.51 | 1.85 | 3.72 | 5.44 | 8.11 |

¹ For 1500 frame gearmotors with 71 frame motors, the motor fan cover is .106 inches below the plane of the reducer feet.

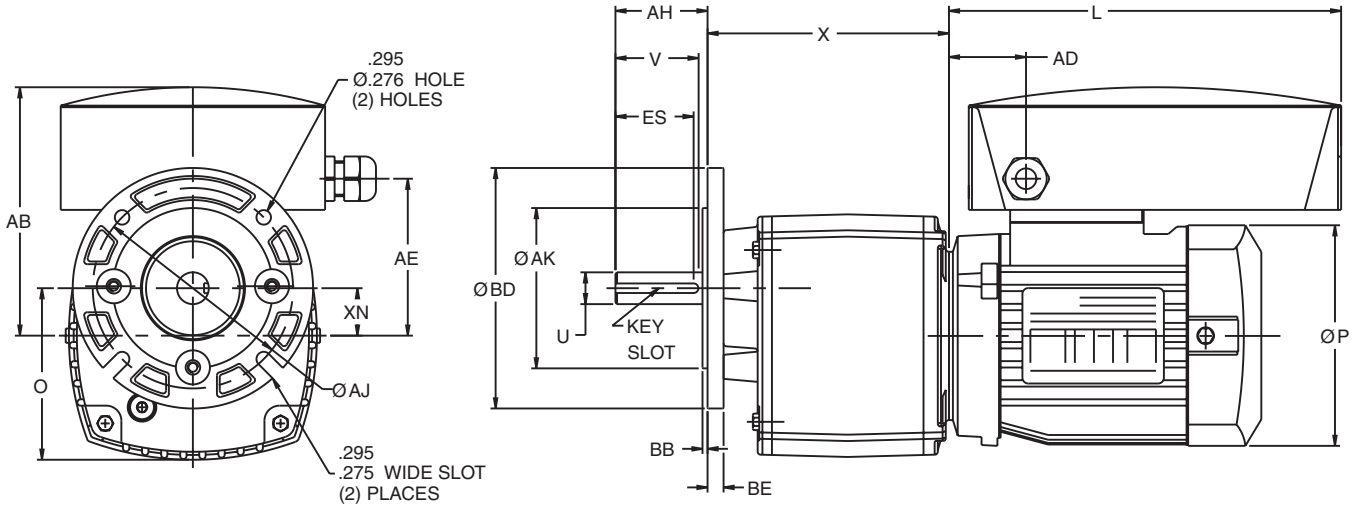
² Shaft extension tolerance: +.0000"; -.0005" up to 1.5" diameter inclusive.

³ Conduit box may be located on either side or on top of motor.

⁴ Largest motor width.



BS FLANGED MOUNT • SINGLE PHASE



DOUBLE, TRIPLE, AND QUAD REDUCTION

| BASIC FRAME | AH | AJ | AK | BB | BD | BE | ES | O | U | KEY SLOT | V | X | XN |
|-------------|------|------|------|------|------|------|------|------|-------|----------|------|------|-------|
| 1502,03,04 | 1.81 | 3.94 | 3.15 | 0.10 | 4.72 | 0.32 | 1.31 | 3.32 | 0.625 | 3/16 Sq. | 1.71 | 4.74 | 0.93 |
| 1802 | 2.06 | 4.53 | 3.74 | 0.12 | 5.51 | 0.31 | 1.48 | 2.48 | 0.625 | 3/16 Sq. | 1.88 | 4.65 | -0.28 |
| 1803 | 2.06 | 4.53 | 3.74 | 0.12 | 5.51 | 0.31 | 1.48 | 2.48 | 0.625 | 3/16 Sq. | 1.88 | 5.43 | -0.28 |

| BASIC MOTOR FRAME NO BRAKE | | | | | |
|-------------------------------|------|------|------|------|------|
| Frame | AB | AD | AE | P | L |
| 56 | 4.88 | 1.45 | 3.08 | 4.33 | 7.71 |
| 63 | 5.07 | 1.85 | 3.28 | 4.96 | 8.11 |
| 71 | 5.51 | 1.85 | 3.72 | 5.44 | 8.11 |

¹ All rough casting dimensions may vary by .25" due to casting variations.

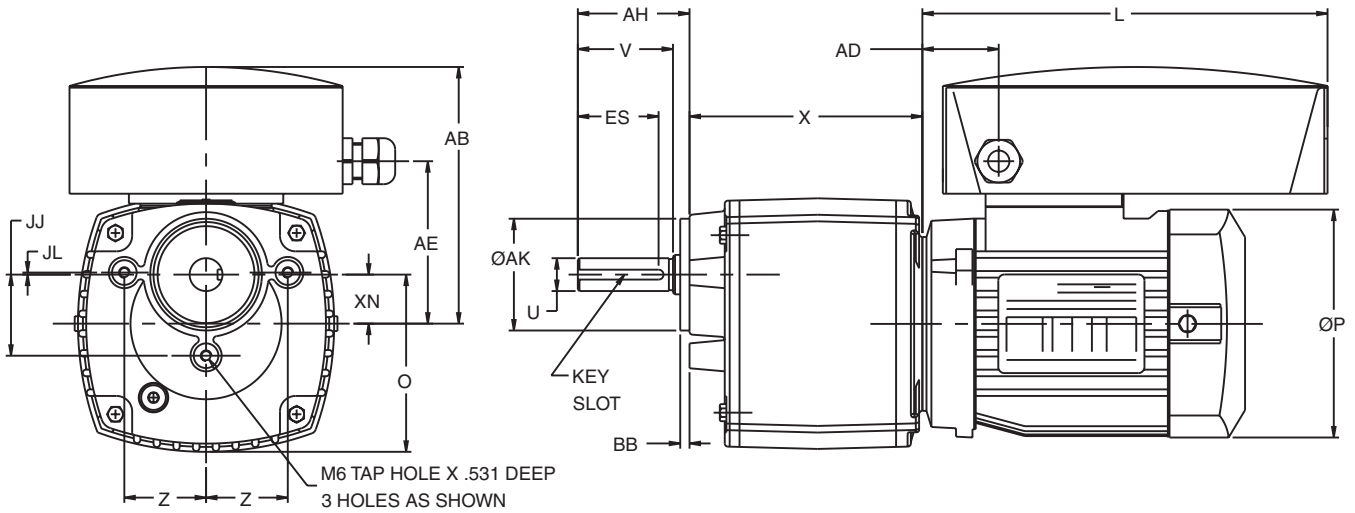
³ Conduit box may be located on either side or on top of motor.

² Shaft extension tolerance: +.0000"; -.0005" up to 1.5" diameter inclusive.

⁴ Largest motor width.



B14 FACE MOUNT • SINGLE PHASE



DOUBLE, TRIPLE, AND QUAD REDUCTION

| BASIC FRAME | AH | AK | BB | ES | JJ | JL | U | KEY SLOT | V | X | XN | Z |
|-------------|------|-------|------|------|------|------|-------|----------|------|------|------|------|
| 1502,03,04 | 2.13 | 2.126 | 0.18 | 1.31 | 1.54 | 0.04 | 0.625 | 3/16 Sq. | 1.81 | 4.30 | 0.93 | 1.56 |

**BASIC MOTOR FRAME
NO BRAKE**

| Frame | AB | AD | AE | P | L |
|-------|------|------|------|------|------|
| 56 | 4.88 | 1.45 | 3.08 | 4.33 | 7.71 |
| 63 | 5.07 | 1.85 | 3.28 | 4.96 | 8.11 |
| 71 | 5.51 | 1.85 | 3.72 | 5.44 | 8.11 |

¹ All rough casting dimensions may vary by .25" due to casting variations.

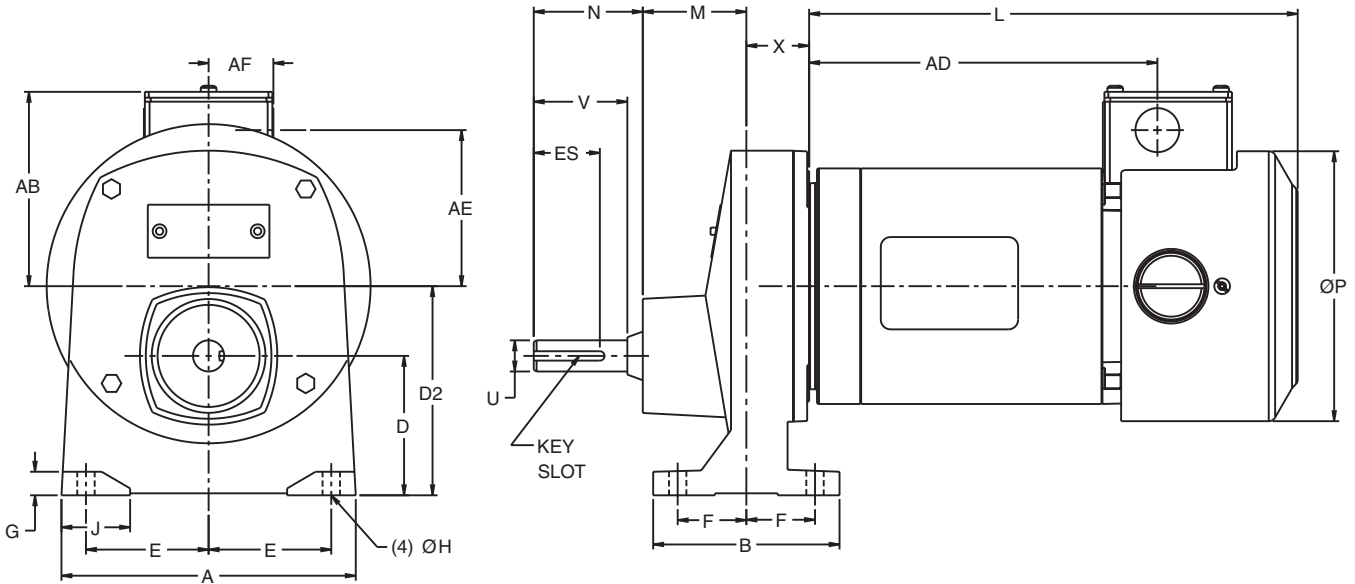
² Shaft extension tolerance: +.0000"; -.0005" up to 1.5" diameter inclusive.

³ Conduit box may be located on either side or on top of motor.

⁴ Largest motor width.



FOOT MOUNT



SINGLE REDUCTION

| BASIC FRAME | A | B | D | D2 | E | ES | F | G | H | J | M | N | U | KEY SLOT | V | X |
|-------------|------|------|------|------|------|------|------|------|------|------|------|------|-------|----------|------|------|
| 1601 | 5.91 | 3.74 | 2.80 | 4.19 | 2.46 | 1.31 | 1.38 | 0.47 | 0.35 | 1.24 | 2.08 | 2.19 | 0.625 | 3/16 Sq. | 1.88 | 1.34 |

BASIC MOTOR FRAME

| Frame | AB | AD | AE | AF | P | L |
|-------|------|------|------|------|------|-------|
| 56S | 2.72 | 5.02 | 1.95 | 0.98 | 3.39 | 6.26 |
| 56L | 2.72 | 6.59 | 1.95 | 0.98 | 3.39 | 7.83 |
| 56VL | 2.72 | 7.38 | 1.95 | 0.98 | 3.39 | 8.62 |
| 63S | 3.90 | 6.00 | 3.13 | 1.30 | 5.41 | 8.82 |
| 63M | 3.90 | 6.99 | 3.13 | 1.30 | 5.41 | 9.80 |
| 63L | 3.90 | 8.17 | 3.13 | 1.30 | 5.41 | 10.98 |

¹ All rough casting dimensions may vary by .25" due to casting variations.

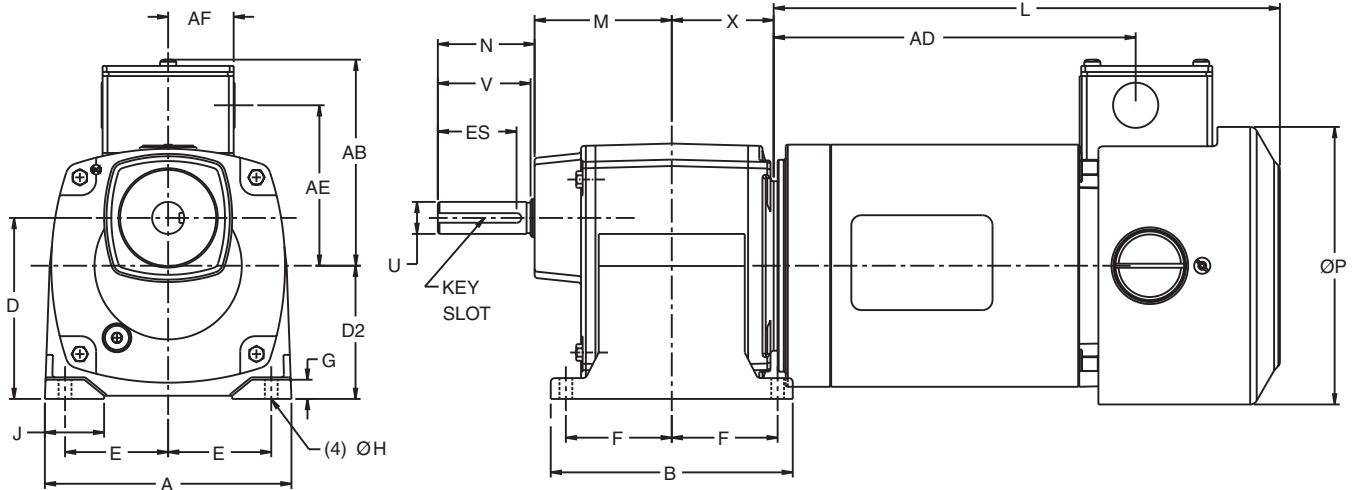
² Shaft extension tolerance: +.0000"; -.0005" up to 1.5" diameter inclusive.

³ Conduit box may be located on either side or on top of motor. Conduit opening may be located 180° from location illustrated above.

⁴ Largest motor width.



FOOT MOUNT



DOUBLE, TRIPLE, AND QUAD REDUCTION

| BASIC FRAME | A | B | D | D2 | E | ES | F | G | H | J | M | N | U | KEY SLOT | V | X |
|-------------|------|------|------|------|------|------|------|------|------|------|------|------|-------|----------|------|------|
| 1502,03,04 | 4.72 | 4.81 | 3.54 | 2.60 | 1.97 | 1.31 | 2.07 | 0.39 | 0.28 | 1.14 | 2.68 | 1.89 | 0.625 | 3/16 Sq. | 1.81 | 1.99 |
| 1602 | 5.91 | 5.12 | 2.80 | 2.80 | 2.46 | 1.31 | 2.07 | 0.47 | 0.35 | 1.24 | 2.94 | 1.83 | 0.750 | 3/16 Sq. | 1.75 | 1.50 |
| 1603 | 5.91 | 5.91 | 2.80 | 2.80 | 2.46 | 1.31 | 2.46 | 0.47 | 0.35 | 1.24 | 3.32 | 1.83 | 0.750 | 3/16 Sq. | 1.75 | 1.90 |
| 1802 | 5.90 | 4.92 | 2.95 | 3.23 | 2.46 | 1.48 | 2.07 | 0.51 | 0.35 | 1.24 | 2.85 | 1.83 | 0.750 | 3/16 Sq. | 1.75 | 1.63 |
| 1803 | 5.90 | 5.71 | 2.95 | 3.23 | 2.46 | 1.48 | 2.47 | 0.51 | 0.35 | 1.24 | 3.25 | 1.83 | 0.750 | 3/16 Sq. | 1.75 | 2.03 |

BASIC MOTOR FRAME

| Frame | AB | AD | AE | AF | P | L |
|-------|------|------|------|------|------|-------|
| 56S | 2.72 | 5.02 | 1.95 | 0.98 | 3.39 | 6.26 |
| 56L | 2.72 | 6.59 | 1.95 | 0.98 | 3.39 | 7.83 |
| 56VL | 2.72 | 7.38 | 1.95 | 0.98 | 3.39 | 8.62 |
| 63S | 3.90 | 6.00 | 3.13 | 1.30 | 5.41 | 8.82 |
| 63M | 3.90 | 6.99 | 3.13 | 1.30 | 5.41 | 9.80 |
| 63L | 3.90 | 8.17 | 3.13 | 1.30 | 5.41 | 10.98 |

¹ For 1500 frame gearmotors with 63 frame motors, the motor fan is .106 inches below the plane of the reducer feet.

² All rough casting dimensions may vary by .25" due to casting variations.

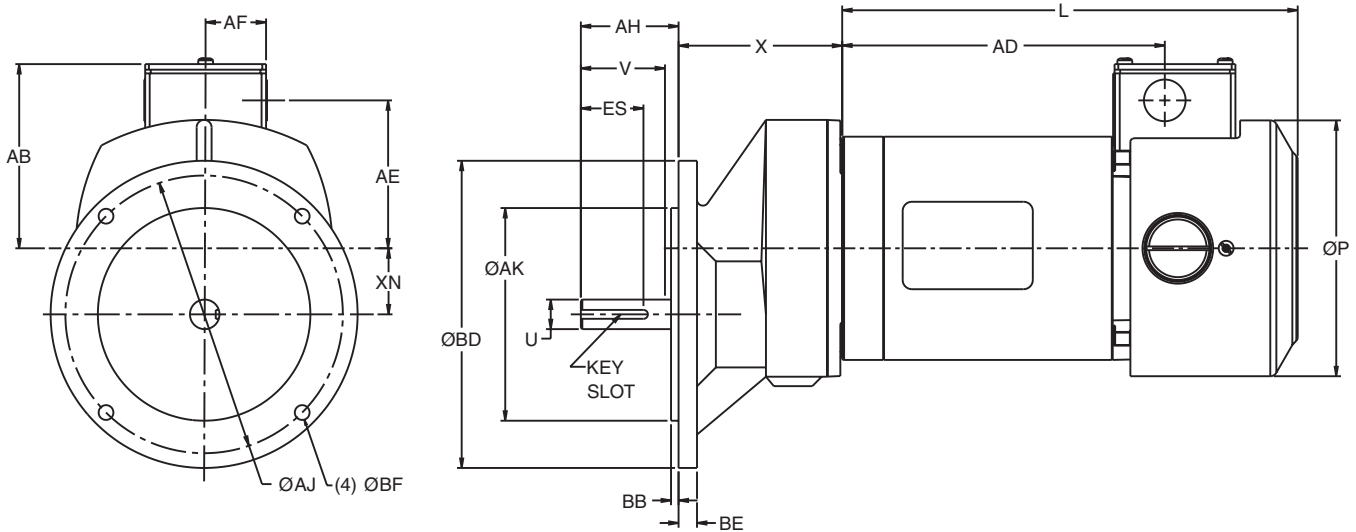
³ Shaft extension tolerance: +.0000"; -.0005" up to 1.5" diameter inclusive.

⁴ Conduit box may be located on either side or on top of motor. Conduit opening may be located 180° from location illustrated above.

⁵ Largest motor width.



56C FLANGED MOUNT



SINGLE REDUCTION

| BASIC FRAME | AH | AJ | AK | BB | BD | BE | BF | ES | U | KEY SLOT | V | X | XN |
|-------------|------|------|-------|------|------|------|--------|------|-------|----------|------|------|------|
| 1601 | 2.07 | 5.88 | 4.500 | 0.16 | 6.50 | 0.39 | 3/8-16 | 1.31 | 0.625 | 3/16 Sq. | 1.91 | 3.54 | 1.39 |

BASIC MOTOR FRAME

| Frame | AB | AD | AE | AF | P | L |
|-------|------|------|------|------|------|-------|
| 56S | 2.72 | 5.02 | 1.95 | 0.98 | 3.39 | 6.26 |
| 56L | 2.72 | 6.59 | 1.95 | 0.98 | 3.39 | 7.83 |
| 56VL | 2.72 | 7.38 | 1.95 | 0.98 | 3.39 | 8.62 |
| 63S | 3.90 | 6.00 | 3.13 | 1.30 | 5.41 | 8.82 |
| 63M | 3.90 | 6.99 | 3.13 | 1.30 | 5.41 | 9.80 |
| 63L | 3.90 | 8.17 | 3.13 | 1.30 | 5.41 | 10.98 |

¹ All rough casting dimensions may vary by .25" due to casting variations.

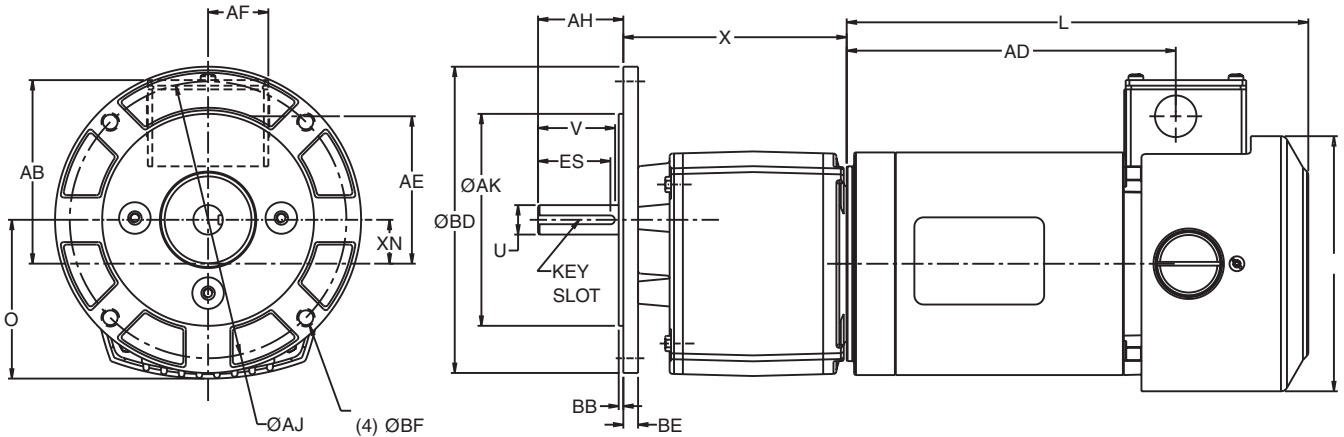
³ Conduit box may be located on either side or on top of motor. Conduit opening may be located 180° from location illustrated above.

² Shaft extension tolerance: +.0000"; -.0005" up to 1.5" diameter inclusive.

⁴ Largest motor width.



56C FLANGED MOUNT



DOUBLE, TRIPLE, AND QUAD REDUCTION

| BASIC FRAME | AH | AJ | AK | BB | BD | BE | BF | ES | O | U | KEY SLOT | V | X | XN |
|-------------|------|-------|-------|------|------|------|--------|------|------|-------|----------|------|------|-------|
| 1502,03,04 | 1.81 | 5.875 | 4.500 | 0.10 | 6.50 | 0.32 | 3/8-16 | 1.31 | 3.31 | 0.625 | 3/16 Sq. | 1.71 | 4.74 | 0.93 |
| 1602 | 2.06 | 5.875 | 4.500 | 0.16 | 6.50 | 0.32 | 3/8-16 | 1.31 | 3.25 | 0.625 | 3/16 Sq. | 1.71 | 4.74 | 0 |
| 1603 | 2.06 | 5.875 | 4.500 | 0.16 | 6.50 | 0.32 | 3/8-16 | 1.31 | 3.25 | 0.625 | 3/16 Sq. | 1.91 | 5.22 | 0 |
| 1802 | 2.06 | 5.875 | 4.500 | 0.12 | 6.50 | 0.39 | 3/8-16 | 1.48 | 2.48 | 0.625 | 3/16 Sq. | 1.88 | 4.65 | -0.28 |
| 1803 | 2.06 | 5.875 | 4.500 | 0.12 | 6.50 | 0.39 | 3/8-16 | 1.48 | 2.48 | 0.625 | 3/16 Sq. | 1.88 | 5.43 | -0.28 |

BASIC MOTOR FRAME

| Frame | AB | AD | AE | AF | P | L |
|-------|------|------|------|------|------|-------|
| 56S | 2.72 | 5.02 | 1.95 | 0.98 | 3.39 | 6.26 |
| 56L | 2.72 | 6.59 | 1.95 | 0.98 | 3.39 | 7.83 |
| 56VL | 2.72 | 7.38 | 1.95 | 0.98 | 3.39 | 8.62 |
| 63S | 3.90 | 6.00 | 3.13 | 1.30 | 5.41 | 8.82 |
| 63M | 3.90 | 6.99 | 3.13 | 1.30 | 5.41 | 9.80 |
| 63L | 3.90 | 8.17 | 3.13 | 1.30 | 5.41 | 10.98 |

¹ All rough casting dimensions may vary by .25" due to casting variations.

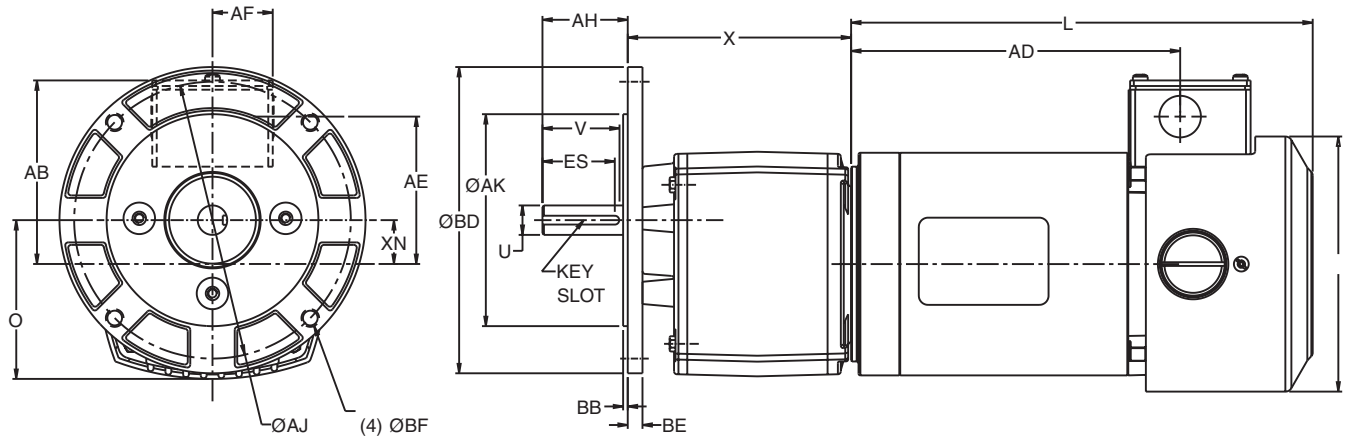
² Shaft extension tolerance: +.0000"; -.0005" up to 1.5" diameter inclusive.

³ Conduit box may be located on either side or on top of motor. Conduit opening may be located 180° from location illustrated above.

⁴ Largest motor width.



BS FLANGED MOUNT



| DOUBLE, TRIPLE, AND QUAD REDUCTION | | | | | | | | | | | | | |
|------------------------------------|------|------|------|------|------|------|------|------|-------|----------|------|------|-------|
| BASIC FRAME | AH | AJ | AK | BB | BD | BE | ES | O | U | KEY SLOT | V | X | XN |
| 1502,03,04 | 1.81 | 3.94 | 3.15 | 0.10 | 4.72 | 0.32 | 1.31 | 3.32 | 0.625 | 3/16 Sq. | 1.71 | 4.74 | 0.93 |
| 1802 | 2.06 | 4.53 | 3.74 | 0.12 | 5.51 | 0.31 | 1.48 | 2.48 | 0.625 | 3/16 Sq. | 1.88 | 4.65 | -0.28 |
| 1803 | 2.06 | 4.53 | 3.74 | 0.12 | 5.51 | 0.31 | 1.48 | 2.48 | 0.625 | 3/16 Sq. | 1.88 | 5.43 | -0.28 |

| BASIC MOTOR FRAME | | | | | | |
|-------------------|------|------|------|------|------|-------|
| Frame | AB | AD | AE | AF | P | L |
| 56S | 2.72 | 5.02 | 1.95 | 0.98 | 3.39 | 6.26 |
| 56L | 2.72 | 6.59 | 1.95 | 0.98 | 3.39 | 7.83 |
| 56VL | 2.72 | 7.38 | 1.95 | 0.98 | 3.39 | 8.62 |
| 63S | 3.90 | 6.00 | 3.13 | 1.30 | 5.41 | 8.82 |
| 63M | 3.90 | 6.99 | 3.13 | 1.30 | 5.41 | 9.80 |
| 63L | 3.90 | 8.17 | 3.13 | 1.30 | 5.41 | 10.98 |

¹ All rough casting dimensions may vary by .25" due to casting variations.

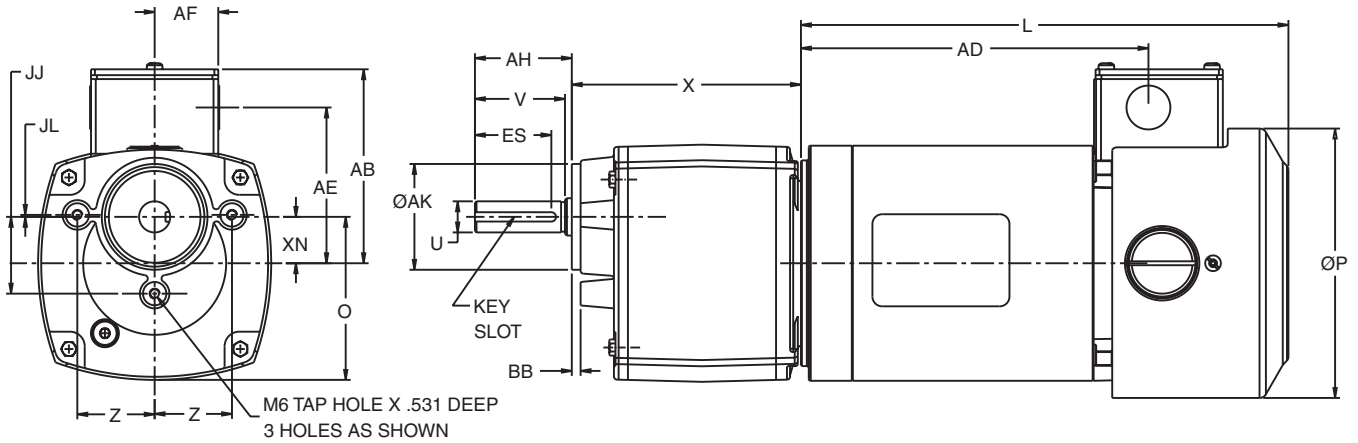
³ Conduit box may be located on either side or on top of motor. Conduit opening may be located 180° from location illustrated above.

² Shaft extension tolerance: +.0000"; -.0005" up to 1.5" diameter inclusive.

⁴ Largest motor width.



B14 FACE MOUNT



DOUBLE, TRIPLE, AND QUAD REDUCTION

| BASIC FRAME | AH | AK | BB | ES | JJ | JL | U | KEY SLOT | V | X | XN | Z |
|-------------|------|-------|------|------|------|------|-------|----------|------|------|------|------|
| 1502,03,04 | 2.13 | 2.126 | 0.18 | 1.31 | 1.54 | 0.04 | 0.625 | 3/16 Sq. | 1.81 | 4.30 | 0.93 | 1.56 |

BASIC MOTOR FRAME

| Frame | AB | AD | AE | AF | P | L |
|-------|------|------|------|------|------|-------|
| 56S | 2.72 | 5.02 | 1.95 | 0.98 | 3.39 | 6.26 |
| 56L | 2.72 | 6.59 | 1.95 | 0.98 | 3.39 | 7.83 |
| 56VL | 2.72 | 7.38 | 1.95 | 0.98 | 3.39 | 8.62 |
| 63S | 3.90 | 6.00 | 3.13 | 1.30 | 5.41 | 8.82 |
| 63M | 3.90 | 6.99 | 3.13 | 1.30 | 5.41 | 9.80 |
| 63L | 3.90 | 8.17 | 3.13 | 1.30 | 5.41 | 10.98 |

¹ All rough casting dimensions may vary by .25" due to casting variations.

² Shaft extension tolerance: +.0000"; -.0005" up to 1.5" diameter inclusive.

³ Conduit box may be located on either side or on top of motor. Conduit opening may be located 180° from location illustrated above.

⁴ Largest motor width.

Experience the Power of EPT EDGE[®] ONLINE

**EPT EDGE[®] Online is the Web site's
technical support center**

Also available "24-7-365," these electronic tools provide for efficient drive design and product selection:

- **eCatalog (an industry first)** - an interactive, robust electronic "database" with over 100,000 part numbers
- **Product Selection (an industry first)** - selection tools with extensive engineering efficiency benefits
- **Smart Interchange** - a dynamic tool that provides an intelligent interchange for competitive parts
- **Media Library** - electronically (PDF) viewable version of paper catalogs and documents, and downloadable installation and maintenance instructions
- **CAD** - an online service that allows users to view and upload a 2D or 3D CAD template drawing in a number of customer-compatible formats to be integrated into users' AutoCAD[®] drawing (version 12-14)



AutoCAD[®] is a registered trademark of Autodesk, Inc., which is not affiliated with Emerson Power Transmission.

www.emerson-ept.com
Connect here to experience "the power of EPT"

