

# AC and DC Gearmotors



**BALDOR**<sup>®</sup>  
MOTORS, DRIVES & GENERATORS

# BALDOR

MOTORS, DRIVES & GENERATORS

Any product is only as good as its individual components. Starting with careful attention to detail in the engineering stage and continuing through the selection of materials and manufacturing processes, each component is designed to stand up in rugged industrial applications.

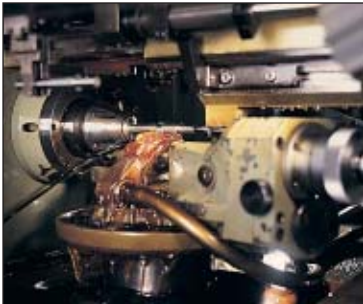


Die cast housings are produced in our own

facility. Machined on precision CNC machining centers and checked on state-of-the-art measuring equipment, these housings provide rigid support and accurate alignment of the gears.



All motors are ball bearing type, rated for industrial duty. These motors, both AC and DC, are constructed from precision machined components and are dynamically balanced for smooth quiet operation.



Outside surfaces are protected by a durable heat cured dry powder coating which is FDA approved for food processing applications.



Continuing education and training helps our people maintain the highest standards of quality. From initial design through final test, our employees are dedicated to building the best product possible.



Over 300 stock ratings are available from Baldor district offices and distributors across the country. Thousands of custom combinations can be assembled from a wide range of standard ratios, motors, and mountings. Baldor sales and engineering personnel are available to help solve your application problems.



## Other Gear Solutions from Baldor



**Single Reduction Worm Gear Reducers**

**Double Reduction Worm Gear Reducers**



**Stainless Steel Worm Gear Reducers**



**Washdown Worm Gear Reducers**

**Helical Worm**



**In-Line Helical Gear Units**



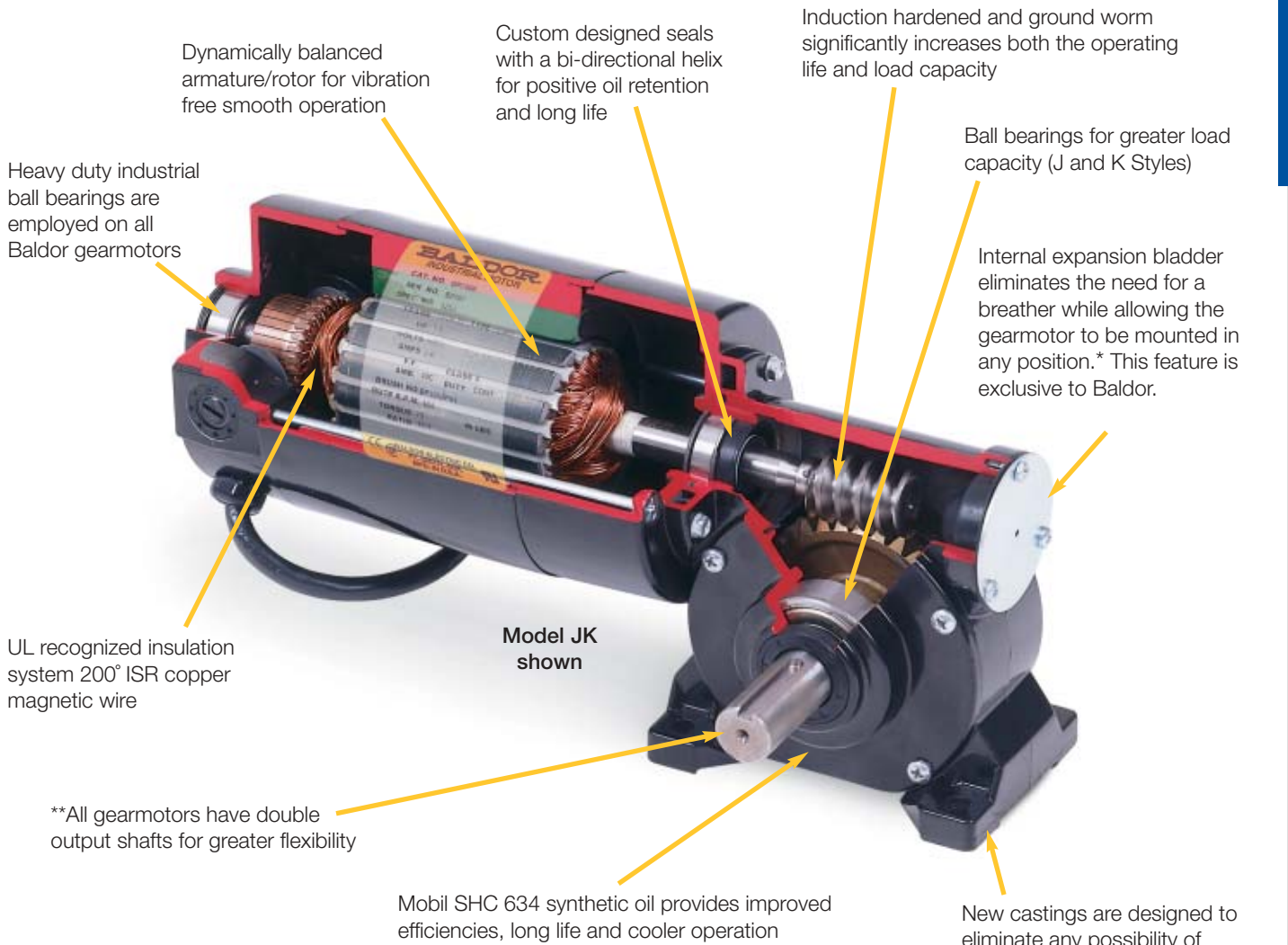
**Ratio Multipliers**



**Gearmotors**

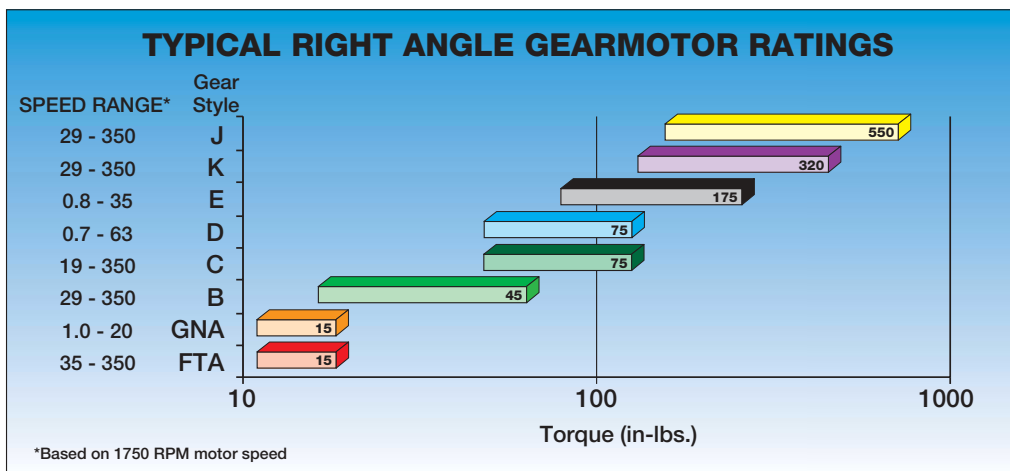


# RIGHT ANGLE GEARMOTORS FEATURES AND BENEFITS



\* Vertical motor below gearhead not recommended.

\*\* K box is single output – left side facing gearhead.



## SINGLE REDUCTION WORM GEARMOTORS



**Style FTA**

- Hardened and ground steel worm provides quiet operation and long life
- Factory lubricated for life, no routine maintenance is required
- Totally enclosed non-ventilated, IP-20 rating
- Double 5/16" output shafts provides mounting flexibility
- AC & DC ratings up to 1/20 hp
- Torque ratings to 15 in-lbs
- Available in 90 volts DC & 115 volts AC



**Style B**

- Hardened and ground steel worm provides quiet operation and long life
- Factory lubricated for life with Mobil SHC 634 synthetic oil
- Baldor's exclusive internal oil expansion bladder. Keeps lubrication in and contamination out
- Totally enclosed non-ventilated and fan cooled IP-20 rating
- Double 1/2" output shafts provides mounting flexibility
- AC & DC ratings up to 1/6 hp
- Torque ratings to 45 in-lbs
- Available in DC voltages 90 or 180 and AC voltages 115 or 230/460



**Style C**

- Hardened and ground steel worm provides quiet operation and long life
- Factory lubricated for life with Mobil SHC 634 synthetic oil
- Baldor's exclusive internal oil expansion bladder. Keeps lubrication in and contamination out
- Totally enclosed non-ventilated and fan cooled IP-20 rating
- Double 1/2" output shafts provides mounting flexibility
- AC & DC ratings up to 1/4 hp
- Torque ratings to 75 in-lbs
- Available in DC voltages 90 or 180 and AC voltages 115 or 230/460



**Style K**

- Hardened and ground steel worm provides quiet operation and long life
- Factory lubricated for life with Mobil SHC 634 synthetic oil
- Baldor's exclusive internal oil expansion bladder. Keeps lubrication in and contamination out
- Totally enclosed non-ventilated and fan cooled IP-20 rating
- Single 5/8" output shaft has both keyway and flat
- AC & DC ratings up to 1/2 hp
- Torque ratings to 320 in-lbs
- Available in DC voltages 90 or 180 and AC voltages 115 or 230/460

**NOTE:** Vertical motor below gearhead not recommended. Avoiding those positions where the high speed oil seal is immersed in oil, will provide greater security against high speed input seal wear.



**Style J**

- Hardened and ground steel worm provides quiet operation and long life
- Factory lubricated for life with Mobil SHC 634 synthetic oil
- Baldor's exclusive internal oil expansion bladder. Keeps lubrication in and contamination out
- Totally enclosed non-ventilated and fan cooled IP-20 rating
- Double 3/4" output shafts provides mounting flexibility
- AC & DC ratings up to 1/2 hp
- Torque ratings to 550 in-lbs
- Available in DC voltages 90 or 180 and AC voltages 115 or 230/460

## DOUBLE REDUCTION WORM GEARMOTORS



**Style GNA**

- Hardened and ground steel worms provides quiet operation and long life
- Ratios from 88:1 to 1600:1
- Totally enclosed non-ventilated IP-20 rating
- Double 5/16" output shafts provides mounting flexibility
- AC & DC ratings up to 1/50 hp
- Torque ratings to 15 in-lbs
- Available in DC voltages 90 or 180 and AC voltages 115 or 230/460



**Style D**

- Hardened and ground steel worms provides quiet operation and long life
- Ratios from 27.4:1 to 2500:1
- Factory lubricated for life with Mobil SHC 634 synthetic oil
- Baldor's exclusive internal oil expansion bladder. Keeps lubrication in and contamination out
- Totally enclosed non-ventilated IP-20 rating
- Double 1/2" output shafts provides mounting flexibility
- AC & DC ratings up to 1/20 hp
- Torque ratings to 75 in-lbs
- Available in DC voltages 90 or 180 and AC voltages 115 or 230/460



**Style E**

- Hardened and ground steel worms provides quiet operation and long life
- Ratios from 50:1 to 2000:1
- Factory lubricated for life with Mobil SHC 634 synthetic oil
- Baldor's exclusive internal oil expansion bladder. Keeps lubrication in and contamination out
- Totally enclosed non-ventilated IP-20 rating
- Double 5/8" output shafts provides mounting flexibility
- AC & DC ratings up to 1/4 hp
- Torque ratings to 175 in-lbs
- Available in DC voltages 90 or 180 and AC voltages 115 or 230/460

**NOTE:** Vertical motor below gearhead not recommended. Avoiding those positions where the high speed oil seal is immersed in oil, will provide greater security against high speed input seal wear.

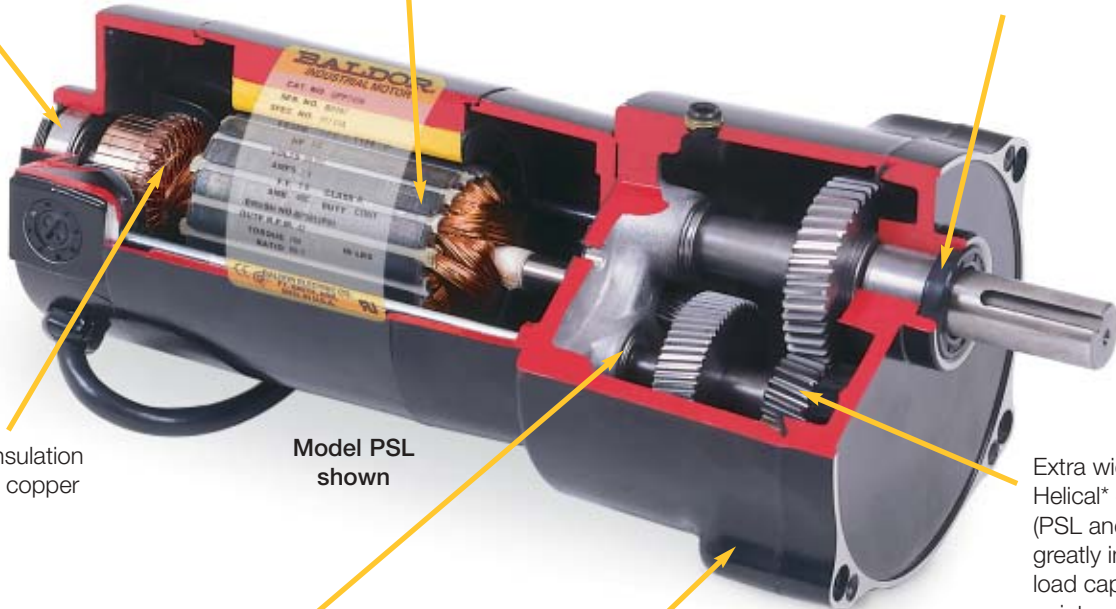
## PARALLEL SHAFT GEARMOTORS

Heavy duty industrial ball bearings are employed on all Baldor gearmotors

Dynamically balanced armature/rotor for vibration free smooth operation

Custom designed seals with a bi-directional helix for positive oil retention and long life

UL recognized insulation system 200° ISR copper magnetic wire



Model PSL shown

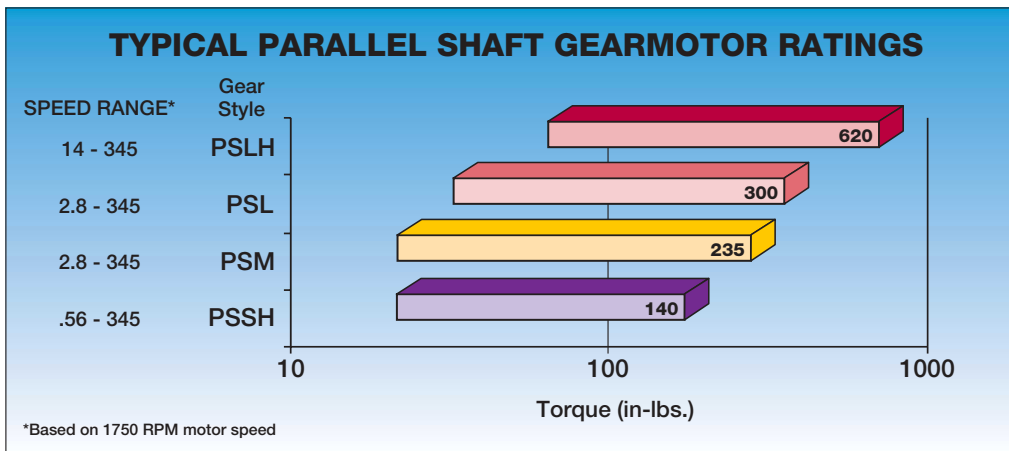
Heavy duty industrial ball bearing on interim stages on all parallel gearmotors

\*\* Mobil SHC 007 synthetic lubrication

Extra wide Helical\* gearing (PSL and PSLH) greatly improves load capacity and quiet operation

New castings are designed to eliminate any possibility of porosity leaks, reduce weight and increase strength and reliability

\* PSSH and PSM helical and spur gearing  
\*\* PSSH Synthetic SHC 634 oil bath lubrication



## PARALLEL SHAFT GEARMOTORS



**Style PSSH**

- Induction hardened helical and spur gears for extra strength
- Ball and needle bearing construction for improved torque capacity
- Factory lubricated for life with Mobil SHC 634 synthetic oil
- Totally enclosed non-ventilated IP-20 rating
- Output shaft is 1/2" diameter
- Industry standard mounting dimensions
- AC & DC ratings up to 1/4 hp
- Ratios from 5:1 to 3125:1
- Torque ratings to 144 in-lbs
- Available in DC voltages 90 or 180 and AC voltages 115 or 230/460
- Additional bases for greater mounting flexibility available



**Style PSM**

- Induction hardened helical and spur gears for extra strength
- Ball and needle bearing construction for improved torque capacity
- Factory lubricated for life with synthetic Mobilith SHC 007
- Totally enclosed non-ventilated IP-20 rating
- Output shaft is 5/8" diameter
- Industry standard mounting dimensions
- AC & DC ratings up to 1/8 hp
- Ratios from 5:1 to 625:1
- Torque ratings to 235 in-lbs
- Available in DC voltages 90 or 180 and AC voltages 115 or 230/460
- Additional bases for greater mounting flexibility available



**Style PSL**

**Style PSLH**

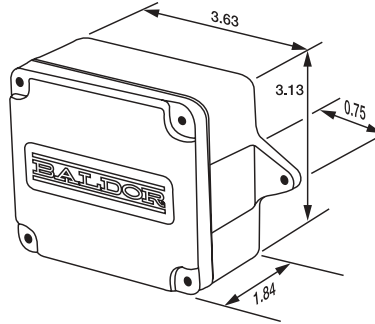
- Induction hardened helical gears for extra strength
- Ball and needle bearing construction for improved torque capacity
- Factory lubricated for life with synthetic Mobilith SHC 007
- Totally enclosed non-ventilated IP-20 rating
- Output shaft is 3/4" diameter
- Industry standard mounting dimensions
- AC & DC ratings up to 1/2 hp
- Ratios from 5:1 to 625:1
- Torque ratings to 637 in-lbs
- Available in DC voltages 90 or 180 and AC voltages 115 or 230/460
- Additional bases for greater mounting flexibility available

**NOTE:** Vertical motor below gearhead not recommended. Avoiding those positions where the high speed oil seal is immersed in oil, will provide greater security against high speed input seal wear.

## GEARMOTOR ACCESSORIES



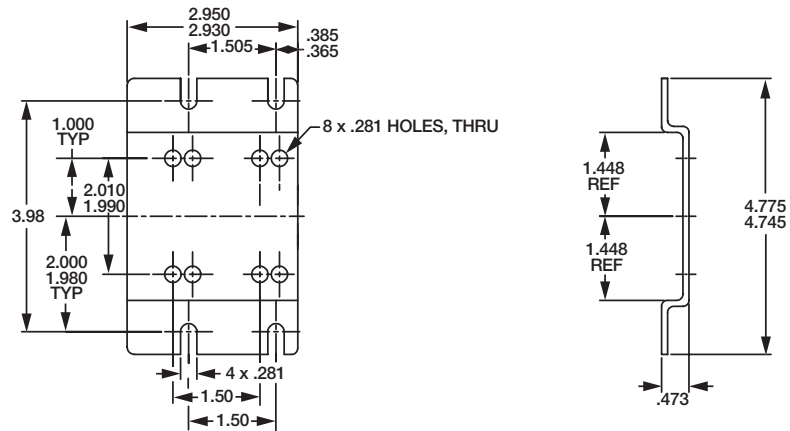
**BKP2400 Conduit Box**



BKP2400 is an optional combination conduit/capacitor mounting kit. This box may be use with stock 24 frame AC motors and Gearmotors.



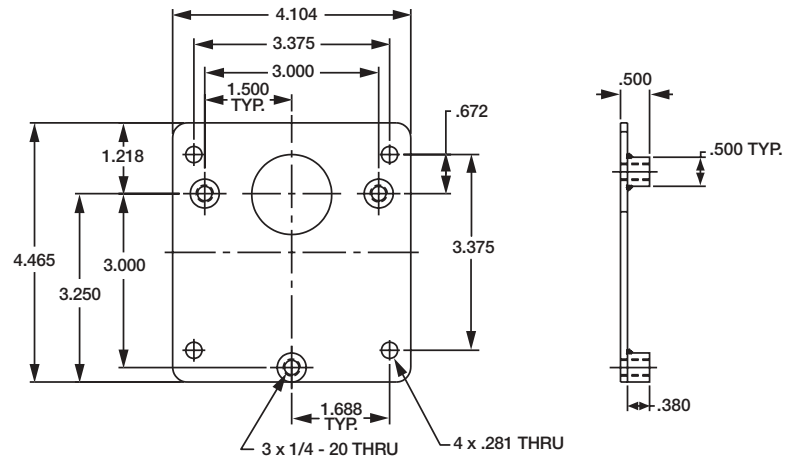
**B92 Base**



B92 is a formed steel-mounting base that bolts to the bottom of the PSM gearbox casting. Provides secure foot mounting and drop-in interchangeability with other manufacturers.



**B93 Adapter**



B93 is a three point face mounting adapter. Provides Interchangeability with other manufactures. Baldor also can provide a PSM with the three point mount integral to the gearhead casting. Contact your local Baldor sales office for additional information.

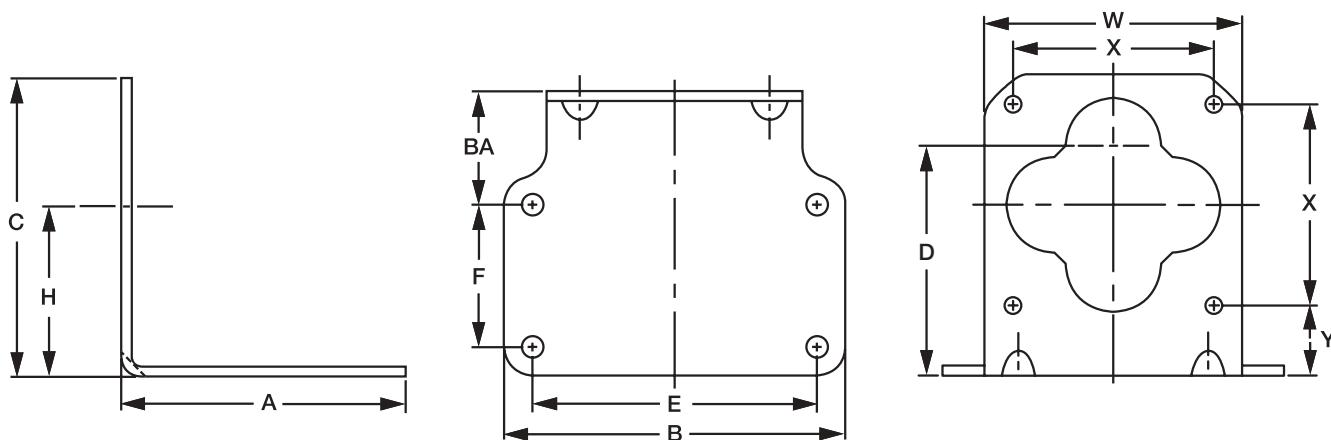
## GEARMOTOR ACCESSORIES



**LB73 & LB73GR** are “L” type mounting brackets used with the PSSH gearmotor. Securely mounts to gear face in a 90 degree locations for floor, wall or ceiling mount. **LB73** is painted black to match stock DC motor while **LB74GR** is painted gray to match our AC line.

**LB74** “L” type mounting brackets used with the PSL and PSLH gearmotor. Securely mounts to gear face in a 90 degree locations for floor, wall or ceiling mount. **LB74** is not recommended for units weighing over 20 lbs.

**LB75** “L” type mounting brackets used with the PSL and PSLH gearmotor. Securely mounts to gear face in a 90 degree locations for floor, wall or ceiling mount. **LB75** is recommended for units weighing over 20 lbs.



	A	B	C	D	E	F	H	BA	W	X	Y
LB73	3.75	4.50	3.94	3.03	3.75	1.88	2.25	1.50	3.40	2.65	0.93
LB74	4.50	6.00	5.45	4.00	5.00	2.50	3.10	1.50	4.63	3.62	1.28
LB75	6.00	6.00	6.00	4.00	5.00	2.50	3.10	1.50	6.00	3.62	1.28

## NEMA Enclosed DC Controls

### FOR PERMANENT MAGNET OR SHUNT WOUND MOTORS



BC140 Enclosed  
(NEMA 1)

Features common to enclosed and chassis mount controls:

- Full wave SCR control with free wheeling diode (NEMA type K) except regen controls.
- Field power supply allows use with shunt wound DC motors as well as permanent magnet motors.
- Adjustable accel, decel, current limit, IR comp, min. and max. speed. Current limit indicating LED.
- 5K speed pot for speed control (remote on chassis mount).
- Kit available for forward/brake/reverse switching (BC140, BC154, BC254 only).
- Horsepower resistor and armature fuse selectable to match control and motor for each application. (Included in price of control).
- Customer selectable armature or tach feedback (except BC138, BC139, BC140, BC140-FBR).
- Anti-demag circuit protects PM motors and helps protect the SCR power bridge against direct shorts.
- Noise rejection circuit eliminates false starts and blown SCR's.
- US and Canadian UL component recognition.

Additional features are standard only on enclosed control:

- On-off switch
- Pilot light
- Terminal strip connections
- 115/230 voltage selection switch or jumper (BC140, BC140-FBR, BC200, BC201, BC202, BC203, BC204, BC254 and BC354 only)
- Built in armature and line fusing
- BC140-FBR includes Forward-Brake-Reverse switch

A Plug-in Horsepower Resistor® and armature fuse **must** be ordered and installed in BC138, BC139, BC140, BC140-FBR, BC141 and BC142. Spare resistor kits are also available. Resistor should be selected based on the motor's rated current.

Hp Range	Catalog Number	Approximate Shipping Weight (Lbs)	Input Voltage
1/100-1/3	BC138	1	115 VAC
1/50-3/4	BC139	1	230 VAC
1/100-2*	BC140	3	115/230 VAC
1/100-2*	BC140-FBR	3	115/230 VAC

**NOTE:** \*1 Hp at 115V and 2 Hp at 230V requires BC143 heatsink kit.  
FBR = Forward/Brake/Reverse.

## DC Control Accessories

Catalog Number	Description	Approximate Shipping Weight (Lbs)
BC24-LF	Ac Line Filter for use with CE Applications	0.5
BC143	External Heatsink Kit (BC140, BC140-FBR, BC141, BC142)	2.0
BC144	Forward-Brake-Reverse Switch Kit for BC140	0.4
BC145	Signal Isolator Board	0.5
BC146	Current Sensing Relay/Overload Protector	0.4
BC147	Barrier Terminal Board (BC141 & BC142)	0.3
BC148	Replacement Potentiometer Kit (5K ohm)	0.1
BC149	Knob and Dial Kit	0.1
BC151	Electronic Speed Potentiometer	0.5
BC152	Barrier Terminal Board With Signal Isolator (BC141 AND BC142)	1.0
BC218	DIN-rail mounting kit for BC141, BC142 or BC204	0.5

**NOTE:** BC24-LF is an AC line filter required for applications where CE is required if the control is not filtered elsewhere in the application. This filter is used on most 115 or 230 VAC, single phase applications where CE is required.

## Chassis Mount DC Controls



BC141 / BC142



BC155

Hp Range	Catalog Number	Approximate Shipping Weight (Lbs)	Input Voltage (1Ph,50/60 Hz)
1/100-1.5**	BC141	1	115 VAC
1/50-3**	BC142	2	230 VAC
5	BC155	5	230 VAC

**NOTE:** Above controls include 5k speed potentiometer.

\*\*1-1.5 Hp at 115 Volts and 2-3 Hp at 230 Volts, requires BC143 Heatsink kit. BC155 Includes integral heatsink.

## Plug-In Horsepower Resistor & Fuse Kit

A Plug-in Horsepower Resistor® and armature fuse **must** be ordered and installed in BC138, BC139, BC140, BC140-FBR, BC141 and BC142. These should be selected based on the motor's **rated current**.

Motor Hp Armature Voltage		Plug-In Hp Resistor Resistance Value (Ohms)	Baldor Catalog Number	Approximate Motor Current (DC Amps)	DC Fuse Rating (AC Amps)
90-130 VDC	180 VDC				
1/100	1/50	1.00	BR1000	0.20	0.50
1/50	1/25	0.51	BR0510	0.30	0.50
1/30	1/15	0.35	BR0350	0.33	0.50
1/20	1/10	0.25	BR0250	0.50	0.75
1/15	1/8	0.25	BR0251	0.80	1.00
1/12	1/6	0.18	BR0180	0.85	1.25
1/8	1/4	0.10	BR0100	1.30	2.00
1/6	1/3	0.10	BR0101	2.00	2.50
1/4	1/2	0.05	BR0050	2.50	4.00
1/3	3/4	0.035	BR0035	3.30	5.00
1/2	1	0.025	BR0025	5.00	8.00
3/4	1 1/2	0.015	BR0015	7.50	12.00
1*	2*	0.01	BR0010	10.00	15.00
1 1/2*	3*	0.006	BR0006	15.00	25.00**

**NOTE:** \* External Heatsink required. \*\* Also used with AC Line Fuse. For AC line fuse rating see manual.

## Fractional Horsepower DC Speed Controls

### FOR PERMANENT MAGNET MOTORS



- Variable Transformer for Manual Speed Adjustment
- Heavy Duty Silicon Full Wave Rectifier
- Built-In Circuit Breaker
- Center Lock Reversing Switch (Center Off)
- Pilot Light
- On/Off Switch
- Totally-Enclosed Cabinet (NEMA 1)
- Supplied w/Type SJO Oil Resistant Cord, 7 Feet Long
- Input Voltage 115VAC 1φ; Output Voltage 0-90 VDC
- CSA Listed File # LR54532

Maximum Hp	Catalog Number	Approximate Shipping Weight (Lbs)	Amp Capacity	Input Voltage
1/15	BC110	5	1.0	115 VAC
1/8	BC115	6	1.5	115 VAC
1/4	BC130	10	3.0	115 VAC

### Contact your nearest Baldor District Office at these World Wide locations, or visit [www.baldor.com](http://www.baldor.com)

#### UNITED STATES

##### ARIZONA PHOENIX

4211 S 43RD PLACE  
PHOENIX, AZ 85040  
PH: 602-470-0407  
FAX: 602-470-0464

##### CALIFORNIA LOS ANGELES

6480 FLOTILLA  
COMMERCE, CA 90040  
PH: 323-724-6771  
FAX: 323-721-5859

##### HAYWARD

21056 FORBES STREET  
HAYWARD, CA 94545  
PH: 510-785-9900  
FAX: 510-785-9910

##### COLORADO DENVER

2520 W BARBERRY PL.  
DENVER, CO 80204  
PH: 303-623-0127  
FAX: 303-595-3772

##### CONNECTICUT WALLINGFORD

65 SOUTH TURNPIKE RD  
WALLINGFORD, CT 06492  
PH: 203-269-1354  
FAX: 203-269-5485

##### FLORIDA TAMPA/PUERTO RICO/ VIRGIN ISLANDS

3906 EAST 11TH AVE  
TAMPA, FL 33605  
PH: 813-248-5078  
FAX: 813-247-2984

##### GEORGIA ATLANTA

62 TECHNOLOGY DR.  
ALPHARETTA, GA 30202  
PH: 770-772-7000  
FAX: 770-772-7200

##### ILLINOIS CHICAGO

795 MITTEL DRIVE  
WOOD DALE, IL 60191  
PH: 630-787-9600  
FAX: 630-787-0434

##### INDIANA INDIANAPOLIS

5525 W. MINNESOTA ST  
INDIANAPOLIS, IN 46241  
PH: 317-246-5100  
FAX: 317-246-5110  
800-428-4141

##### IOWA DES MOINES

1901 BELL AVENUE,  
SUITE 7  
DES MOINES, IA 50315  
PH: 515-244-9996  
FAX: 515-244-6124

##### MARYLAND BALTIMORE

6660 SANTA BARBARA RD.  
SUITE 22-24  
ELK RIDGE, MD. 21075  
PH: 410-579-2135  
FAX: 410-579-2677

##### MASSACHUSETTS BOSTON

317 BROOKS ST.  
WORCESTER, MA 01606  
PH: 508-854-0708  
FAX: 508-854-0291

##### MICHIGAN DETROIT

33782 STERLING  
PONDS BLVD.  
STERLING HEIGHTS,  
MI 48312  
PH: 586-978-9800  
FAX: 586-978-9969

##### GRAND RAPIDS

668 3 MILE ROAD NW  
GRAND RAPIDS, MI 49504  
PH: 616-785-1784  
FAX: 616-785-1788

##### MINNESOTA MINNEAPOLIS

21080 134TH AVE. N.  
ROGERS, MN 55374  
PH: 763-428-3633  
FAX: 763-428-4551

##### MISSOURI ST LOUIS

422 INDUSTRIAL DRIVE  
MARYLAND HEIGHTS,  
MO 63043  
PH: 314-298-1800  
FAX: 314-298-7660

##### KANSAS CITY

915 NW PLATTE VALLEY DR  
RIVERSIDE, MO 64150  
PH: 816-587-0272  
FAX: 816-587-3735

##### NEW YORK AUBURN

ONE ELLIS DRIVE  
AUBURN, NY 13021  
PH: 315-255-3403  
FAX: 315-253-9923

##### NORTH CAROLINA GREENSBORO

1220 ROTHERWOOD RD  
GREENSBORO, NC 27406  
PH: 336-272-6104  
FAX: 336-273-6628

##### OHIO CINCINNATI

2900 EARHART COURT  
SUITE 200  
HEBRON, KY 41048  
PH: 859-586-0222  
FAX: 859-586-0779

##### CLEVELAND

8929 FREEWAY DRIVE  
MACEDONIA, OH 44056  
PH: 330-468-4777  
FAX: 330-468-4778

##### OKLAHOMA TULSA

2 EAST DAWES  
BIXBY, OK 74008  
PH: 918-366-9320  
FAX: 918-366-9338

##### OREGON PORTLAND

20393 SW AVERY CRT  
TUALATIN, OR 97062  
PH: 503-691-9010  
FAX: 503-691-9012

##### PENNSYLVANIA PHILADELPHIA

1035 THOMAS BUSCH  
MEMORIAL HIGHWAY  
PENN SAUKEN, NJ 08110  
PH: 856-661-1442  
FAX: 856-663-6363

##### PITTSBURGH

616H BEATTY ROAD  
MONROEVILLE, PA 15146  
PH: 412-380-7244  
FAX: 412-380-7250

##### TENNESSEE MEMPHIS

4000 WINCHESTER RD  
MEMPHIS, TN 38118  
PH: 901-365-2020  
FAX: 901-365-3914

##### TEXAS HOUSTON

4647 PINE TIMBERS  
SUITE # 135  
HOUSTON, TX 77041  
PH: 713-895-7062  
FAX: 713-690-4540

##### DALLAS

3040 QUEBEC  
DALLAS, TX 75247  
PH: 214-634-7271  
FAX: 214-634-8874

##### ODESSA

6968 EAST COMMERCE  
ODESSA, TX 79762  
PH: 915-367-2707  
FAX: 915-367-9877

##### UTAH SALT LAKE CITY

70 WEST SENIOR WAY  
SALT LAKE CITY, UT 84115  
PH: 801-973-6363  
FAX: 801-973-6301

##### WISCONSIN MILWAUKEE

2725 SOUTH 163RD ST  
NEW BERLIN, WI 53151  
PH: 262-784-5940  
FAX: 262-784-1215

##### INTERNATIONAL SALES FORT SMITH, AR

BALDOR ELECTRIC CO  
FORT SMITH, AR 72902  
PH: 479-646-4711  
FAX: 479-648-5895

##### CANADA EDMONTON, ALBERTA

4053-92 STREET  
EDMONTON, ALBERTA  
T6E6R8  
PH: 780-434-4900  
FAX: 780-438-2600

##### OAKVILLE, ONTARIO

2750 COVENTRY ROAD  
OAKVILLE, ONTARIO  
L6H6R1  
PH: 905-829-3301  
FAX: 905-829-3302

##### MONTREAL, QUEBEC

1844 WILLIAM STREET  
MONTREAL, QUEBEC  
H3J1R5  
PH: 514-933-2711  
FAX: 514-933-8639

##### VANCOUVER, BRITISH COLUMBIA

1538 KEBET WAY  
PORT COQUITLAM, BC  
V3C 5M5  
PH 604-421-2822  
FAX: 604-421-3113

##### WINNIPEG, MANITOBA

54 PRINCESS STREET  
WINNIPEG, MANITOBA  
R3B1K2  
PH: 204-942-5205  
FAX: 204-956-4251

##### AUSTRALIA

UNIT 3, 6 STANTON RD  
SEVEN HILLS, NSW 2147  
AUSTRALIA  
PH: (61)2)9674 5455  
FAX: (61)2)9674 2495

UNIT 3-73 MAIN ROAD  
CLAYTON VIC 3168,  
AUSTRALIA  
PH: (61)3)5624555  
FAX: (61)3)5624822

##### CHINA

SHANGHAI JIAHUA  
BUSINESS CENTER  
ROOM NO. C-203  
808 HONG QIAO ROAD  
SHANGHAI 200021  
PH: 86-21-64473060  
FAX: 86-21-64078620

##### EL SALVADOR

BALDOR RESIDENCIAL  
PINARES DE SUJZA POL.  
15 #44, NVA. SAN  
SALVADOR EL SALVADOR,  
CENTRO AMERICA  
PH: (503) 288-1519  
FAX: (503) 288-1518

##### FRANCE

2, RUE DU VALLON  
94440 MAROLLES EN BRIE  
PH: 33 145 10 7902  
FAX: 33 145 99 0864

##### GERMANY

DIESELSTRASSE 22  
D-85551 KIRCHHEIM  
MUNICH, GERMANY  
PH: (49) (89) 90508-0  
FAX: (49) (89) 90508-491

##### ITALY

SUCCURSALE DI  
MENDRISIO  
VIA BORROMINI 20A  
CH-6850 MENDRISIO  
PH: 0041 91 640 99 50  
FAX: 0041 91 630 26 33

##### JAPAN

NEO MIME 501  
2-5 DAIMACHI,  
KANAGAWA-KU  
YOKOHAMA, 221-0834,  
JAPAN  
PH: 81-45-412-4506  
FAX: 81-45-412-4507

##### MÉXICO

BLVD. AL AEROPUERTO,  
KM. 2 LEÓN 37545,  
GUANAJUATO, MÉXICO  
PH: 52-477-761-2030  
FAX: 52-477-761-2010

##### PANAMA

BALDOR SUDAMERICA  
9109 0818, ZONA 6  
BETHANIA  
PANAMÁ CITY, REP. DE  
PANAMÁ  
PH: (507) 261-5347  
FAX: (507) 261-5355

##### PHILIPPINES

ROOM 604, WEB-JET  
ACROPOLIS BLDG.  
8120 E. RODRIGUEZ  
AVENUE  
BAGUMBAYAN,  
QUEZON CITY  
PHILIPPINES  
PH: (632) 638-2241  
FAX: (632) 638-2243

##### SINGAPORE

51 KAKI BUKIT ROAD 2  
K B WAREHOUSE  
COMPLEX  
SINGAPORE 417863  
PH: (65) 6 744 2572  
FAX: (65) 6 747 1708

##### SWITZERLAND

POSTFACH 73  
SCHUTZENSTRASSE 59  
CH-8245 FEUERTHALEN  
SWITZERLAND  
PH: (41) (52) 6474700  
FAX: (41) (52) 6592394

##### TAIWAN

ROOM R, 2F, NO. 124  
CHUNG CHENG ROAD,  
SHIHLIN DIST.  
TAIPEI 11141  
PH: 886-2-2835-1666  
EXT. 802  
FAX: 886-2-2835-1717

##### UNITED KINGDOM

6 BRISTOL  
DISTRIBUTION PARK  
HAWKLEY DRIVE  
BRISTOL BS32 0BF U.K.  
PH: 44 1454 850000  
FAX: 44 1454 859001



Baldor Electric Company  
P.O. Box 2400  
Fort Smith, AR 72902-2400 U.S.A.  
Ph (479) 646-4711 • Fax (479) 648-5792  
International Fax (479) 648-5895  
[www.baldor.com](http://www.baldor.com)